

About FTP Send

This function converts original data scanned by this machine into a file supported by a computer, and uploads it to the FTP server.

This function is useful when transferring a file through the FTP server.

A file uploaded to the FTP server can be downloaded from a computer.



Main Screen for PC Sending (SMB/FTP/WebDAV)

For details on the main screen, refer to [Here](#).

Configuring the Operating Environment for FTP Send

Configure the settings for using the FTP Send function.

For details on the setting procedure, refer to [Here](#).

Configuring Settings as Needed

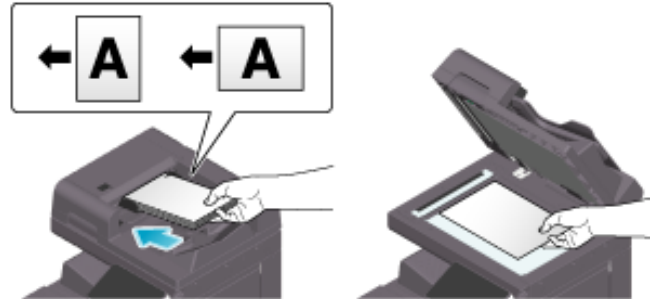
Registering a frequently used destination

Pre-registering a frequently used destination, this machine will save you the trouble of having to enter it each time you send data.

For details on the registration procedure, refer to [Here](#).

Sending (Basic Operation Flow)

1. Load the original.

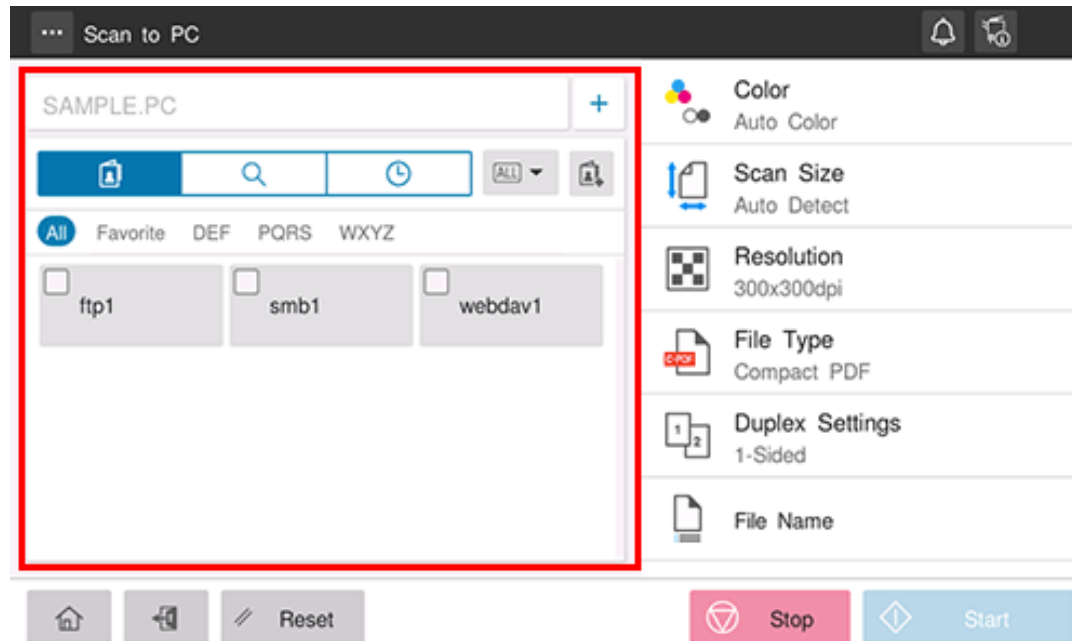


2. Tap [Scan to PC] on the home screen.



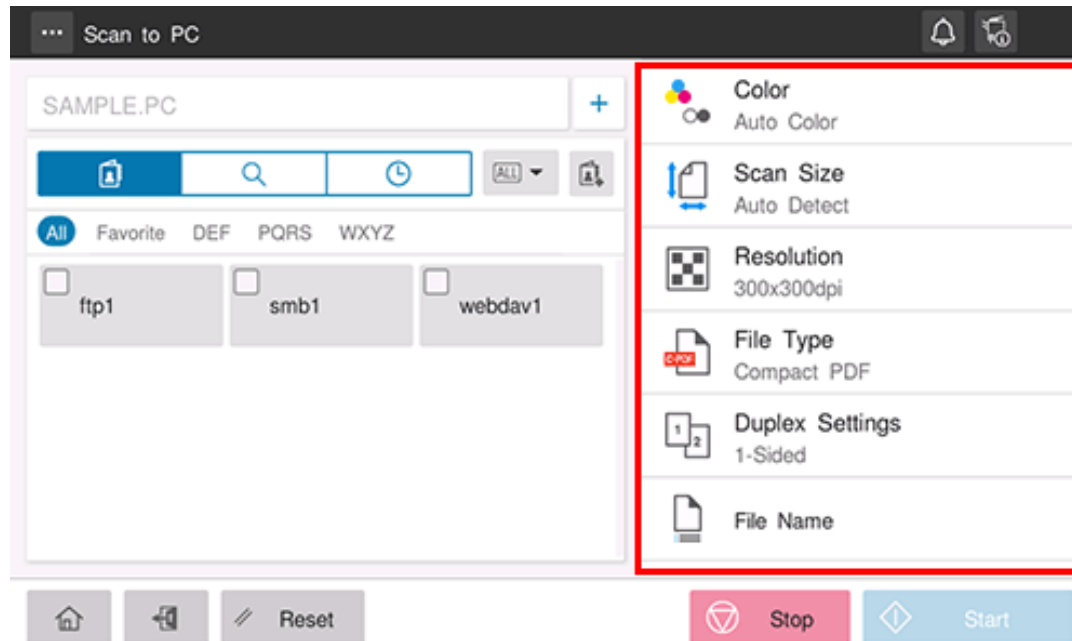
3. Specify the destination.

➡ For details on how to specify a destination, refer to [Here](#).



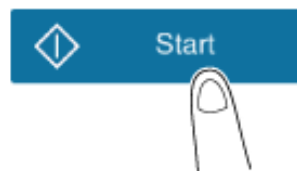
4. Specify transmission options as needed.

➔ For details on option settings, refer to [Here](#).



5. Use the Start key to start transmission.

- ➔ Using the Stop key enables you to stop scanning the original. A list of the currently stopped jobs is displayed. To stop transmission, select the target job from the list, and delete it.





Reference

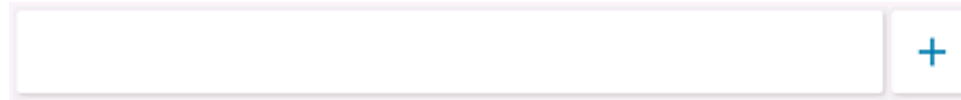
❖ Changing the default option setting ([Here](#))

Specifying a Destination

Directly entering the destination

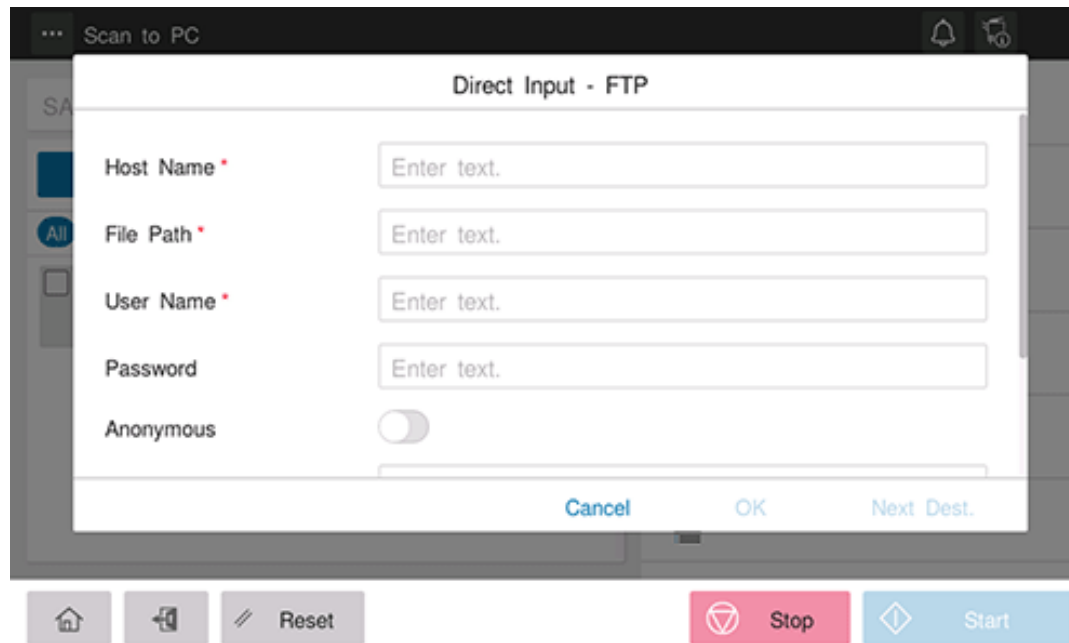
Directly enter destination information.

1. Tap [+].



2. Select [FTP].

3. Enter destination information.




Setting	Description
---------	-------------


[Host Name]	Enter the destination host name or IP address (using up to 253 bytes). <ul style="list-style-type: none"> ❖ Example to enter the host name: "host.example.com" ❖ Example to enter the IP address (IPv4): "192.168.1.1" ❖ Example to enter the IP address (IPv6): "fe80::220:6bff:fe10:2f16"
[File Path]	Enter the folder name of the host specified in [Host Name] (using up to 127 bytes). When not specifying the folder name, enter only "/". <ul style="list-style-type: none"> ❖ Example to enter the folder name: "scan" ❖ Example to enter the folder name in the folder: "scan/document"
[User Name]	If authentication is required in the FTP server, enter the available user name to log in (using up to 64 characters).
[Password]	Enter the password (using up to 64 characters, excluding double quotation marks ").
[Anonymous]	When authentication is not required in the FTP server, set this option to ON (default: OFF).
[Port Number]	If necessary, change the port number (default: [21]).
[Proxy]	When a proxy server is used in your environment, set this option to ON (default: OFF).
[PASV]	When the PASV mode is used in your environment, set this option to ON (default: OFF).

4. Tap [OK].


Using Address Book

Selecting the Destination tab () displays a list of destinations registered on this machine. Switch the display using an index, and specify the target destination. For details, refer to [Here](#).

Searching for the registered destination

Tapping the Search tab () displays the destination search screen. If a large number of destinations are registered, the system searches for the registered name of the destination or characters of the address to find the target destination. For details, refer to [Here](#).

Using Job History

Tapping the History tab () displays a list of transmission logs. Specify the target destination from the previous five job histories. For details, refer to [Here](#).