

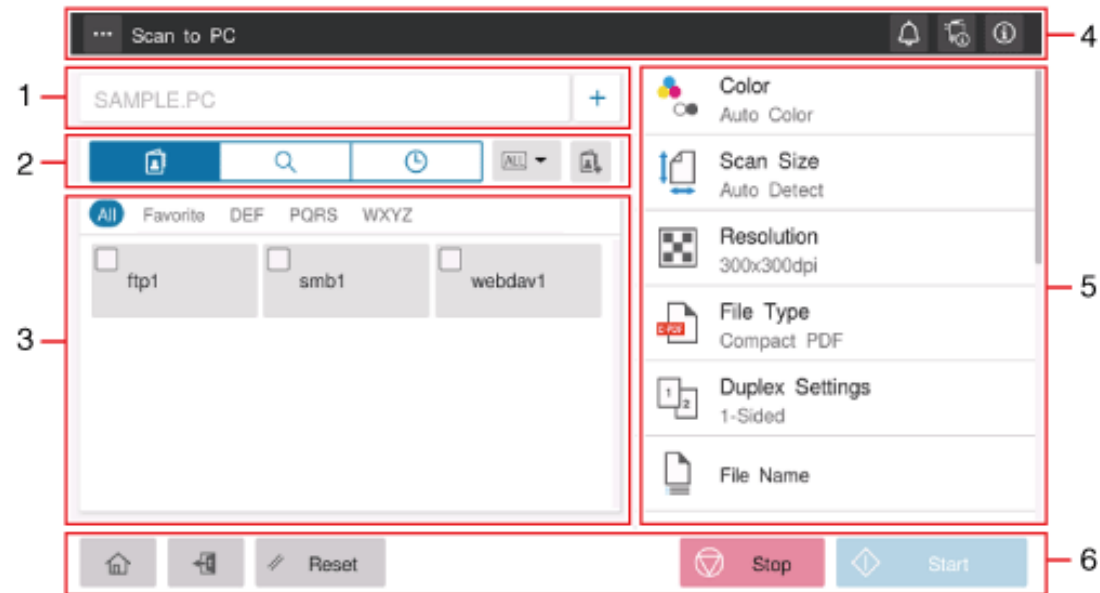
About SMB Send





This function converts original data scanned by this machine into a file supported by a computer, and sends it to a shared folder of a computer or server. It also sends a file to your computer as well as to a file server that is usually used to transfer files, which enables sharing of the file between computers.









Main Screen for PC Sending (SMB/FTP/WebDAV)

If you tap [Scan to PC] on the home screen, the main screen for PC sending (SMB/FTP/WebDAV) is displayed.



No.	Name	Description
1	Destination display area	<p>Displays the specified destinations.</p> <p>If two or more destinations are specified, the number of destinations is indicated by [+N] (N: number).</p> <p>When you tap while the destination is specified, the destination list screen is displayed. You can check, edit, or delete the specified destinations.</p> <p>You can tap [+] to directly enter destination information and add a new destination.</p>
2	Display switch tab	<p>Switches the destination specification method. The display of the destination specification area is switched depending on the selected tab.</p> <ul style="list-style-type: none"> ☒ Destination tab (): Specify the desired one from the list of destinations registered on this machine. ☒ Search tab (): Search for the destination registered on this machine. ☒ History tab (): Specify the desired one from the job history list. ☒ Address registration key (): Allow you to register a destination in the address book on this machine.
3	Destination specification area	Specify the destination to suit the selected tab.

4	Menu icon ()	Allows you to change how to display the list of registered destinations in the destination specification area. When [Change Permission for Default Value Setting] (Here) is set to ON, you can change the default option setting for sending to the desired one.
	Notification icon ()	You can check warnings or messages related to the status of this machine. For details, refer to Here .
	Device information icon ()	
	Information icon ()	
5	Function setting key	Specify transmission options as needed.
6	[Start]	Scans the original, and starts transmission.
	[Stop]	Stops scanning the original.
	[Reset]	Returns the setting to the default.
	Access key ()	Performs login or logout when user authentication or account track is installed on this machine.
	Home key ()	Returns to the home screen.

Configuring the SMB Send Environment

Configure the settings for using the SMB Send function.

For details on the setting procedure, refer to [Here](#).



Tips

In Mac OS, configure the following setting.

- ❖ Set [SMB Authentication Setting] to [NTLM v1/v2].
- ❖ Synchronize the date and time, including the time zone, between the machine and your computer. For details on how to set the date and time of this machine, refer to [Here](#).

Sharing a Folder on Computer

In Windows 7/8.1/10:

Carry out preparations to send original data scanned by this machine to your computer.

First, check the name of your computer and that of the login user.

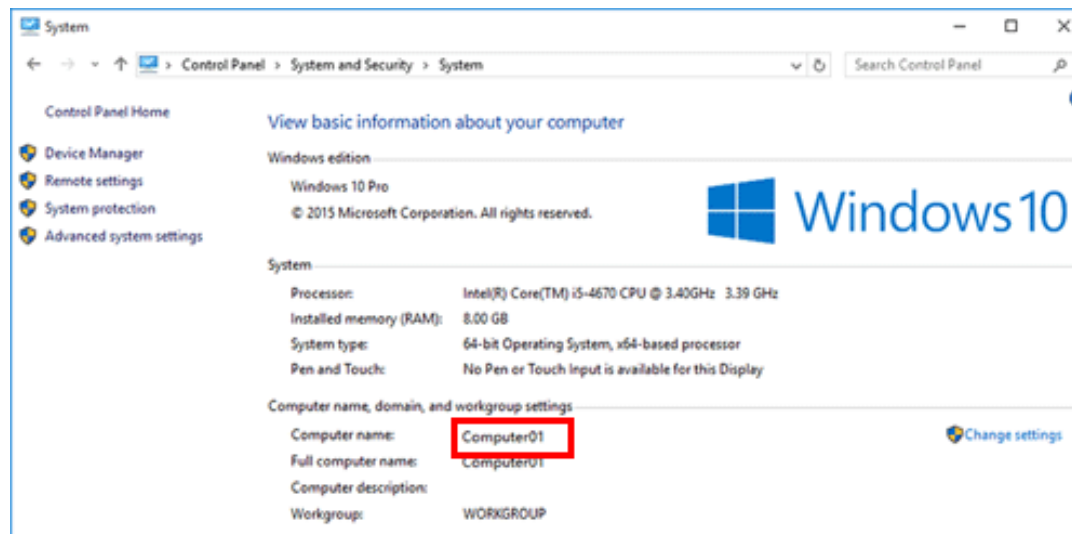
✓ Administrator privileges are required to perform this task.

1. While pressing the [Windows] (⊞) key, press the [X] key, and then click [System properties] in the displayed menu.

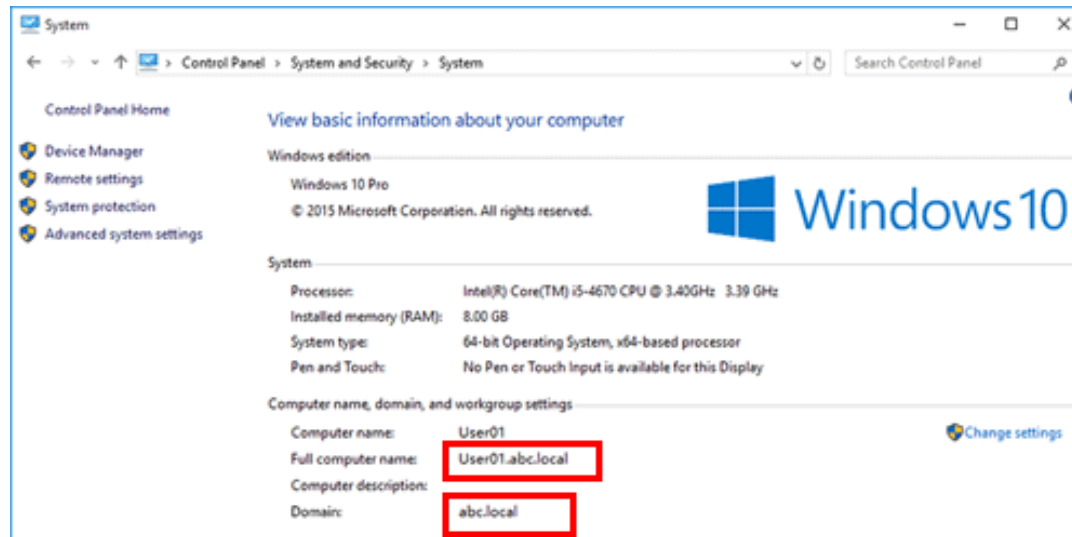
➔ In Windows 7, open the Start menu, and click [Computer] - [System properties].

2. Check [Computer name].

➔ The computer name is required to specify a destination. Write down the computer name.




➔ For domain user, the domain name is required to specify a destination along with the user name. Write down the domain name.



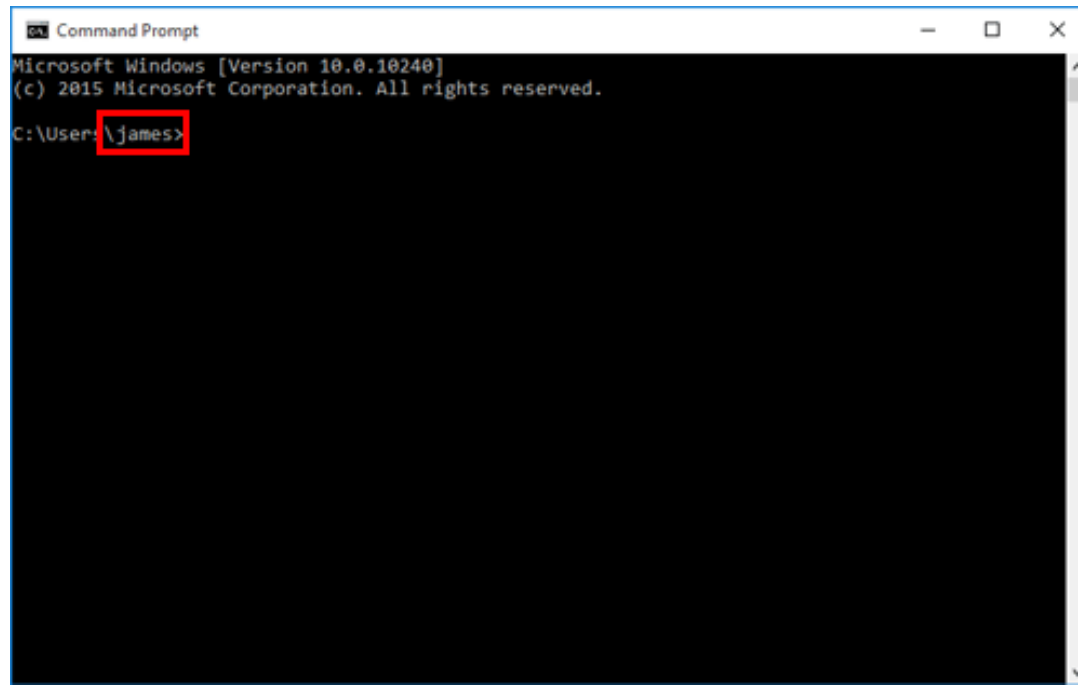
Then, close the window.

3. From the Start menu, click [Windows System] - [Command Prompt].

- ➔ In Windows 8.1, while pressing the [Windows] () key, press the [X] key, and then click [Command Prompt] in the displayed menu.
- ➔ In Windows 7, open the Start menu, and click [All Programs] - [Accessories] - [Command Prompt].

4. Check the name of the user who logs in to the computer.

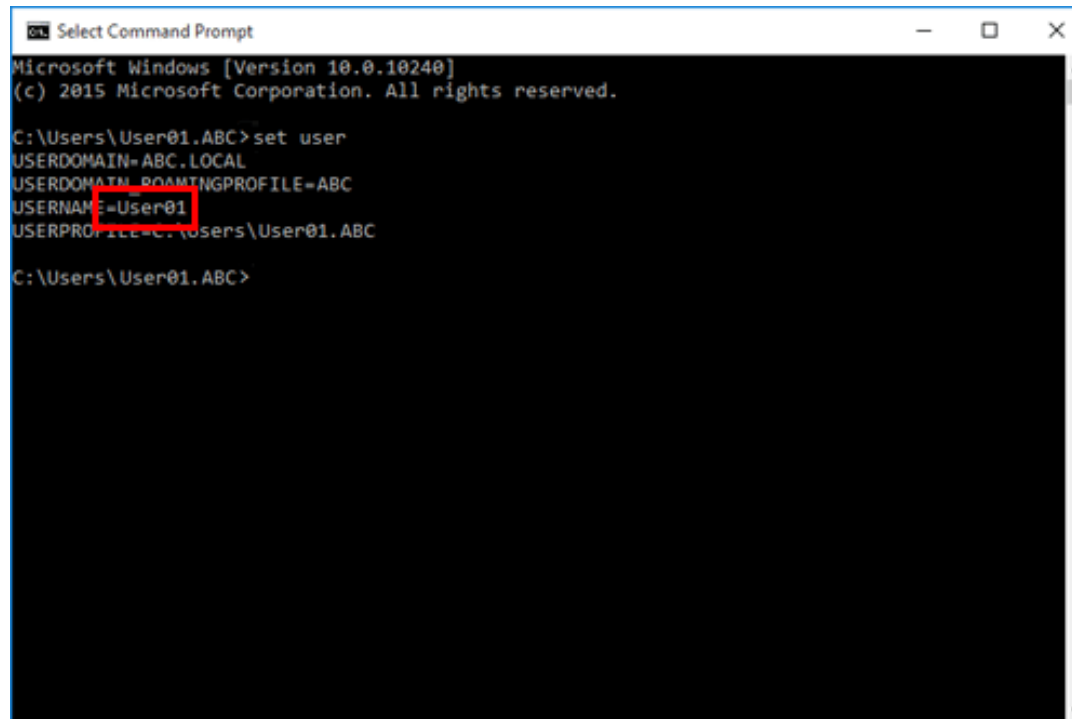
- ➔ The user name is required to configure folder sharing settings and specify destinations. Write down the user name.



```
Command Prompt
Microsoft Windows [Version 10.0.10240]
(c) 2015 Microsoft Corporation. All rights reserved.

C:\Users\james>
```

➡ For domain users, type in "set user", and check the user name.



```
Select Command Prompt
Microsoft Windows [Version 10.0.10240]
(c) 2015 Microsoft Corporation. All rights reserved.


C:\Users\User01.ABC>set user
USERDOMAIN=ABC.LOCAL
USERDOMAIN_ROAMINGPROFILE=ABC
USERNAME=User01
USERPROFILE=C:\Users\User01.ABC

C:\Users\User01.ABC>
```

Then, close the window.

Next, create a folder where to send the scanned original data, and start sharing.

5. From the Start menu, click [Windows System] - [Control Panel] - [Network and Internet] - [Network and Sharing Center] - [Change advanced sharing settings].

- ➔ In Windows 8.1, while pressing the [Windows] () key, press the [X] key, and then click [Control Panel] - [Network and Sharing Center] - [Change advanced sharing settings] in the displayed menu.
- ➔ In Windows 7, open the Start menu, and click [Control Panel] - [Network and Internet] - [Network and Sharing Center] - [Change advanced sharing settings].

6. In the [Advanced sharing settings] screen, click [Turn on file and printer sharing].

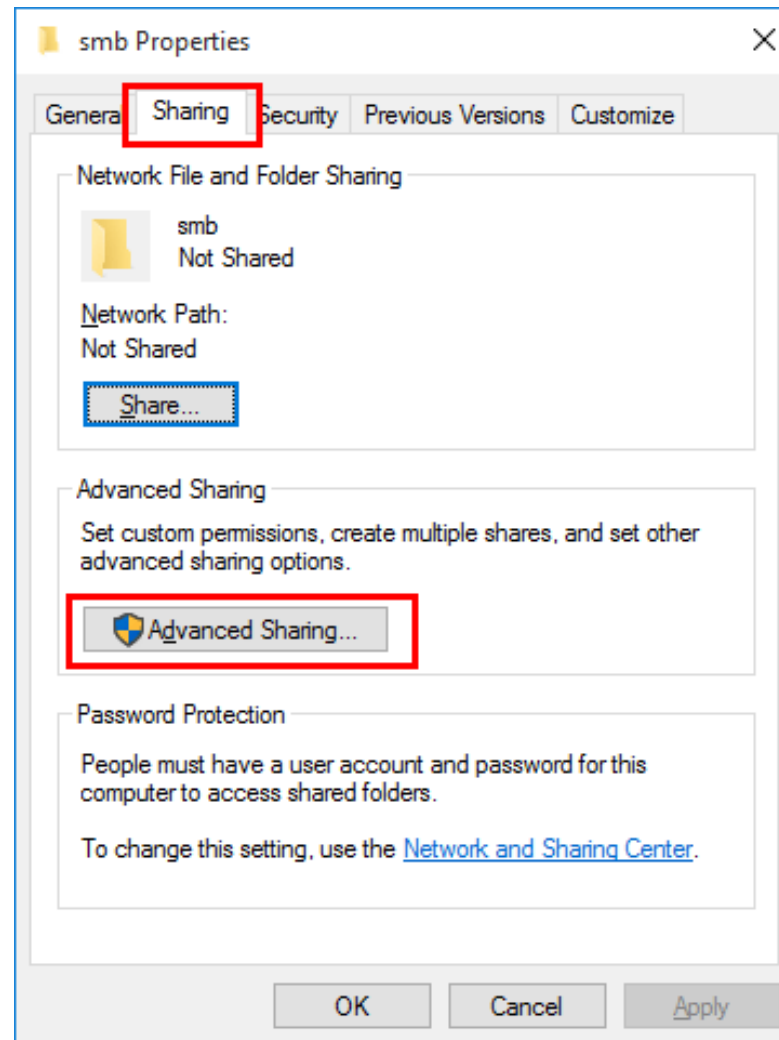
Click [Save Changes], and close the window.

7. Create a new folder in any place, and name it.

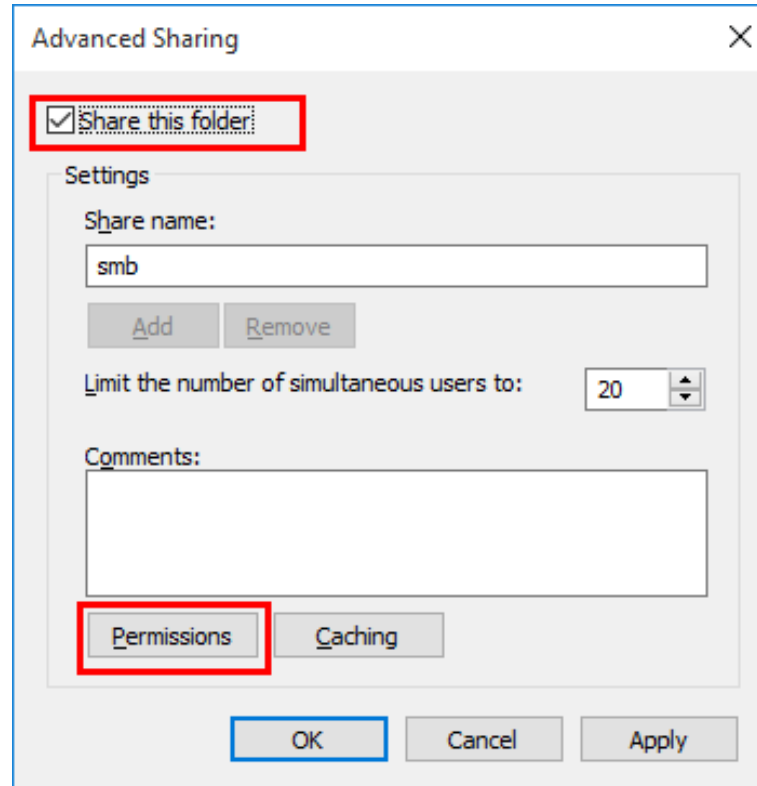
➔ The folder name is required to specify a destination. Write down the folder name.

8. Right-click on the folder, then click [Properties].

9. Click the [Sharing] tab, and also click [Advanced Sharing].

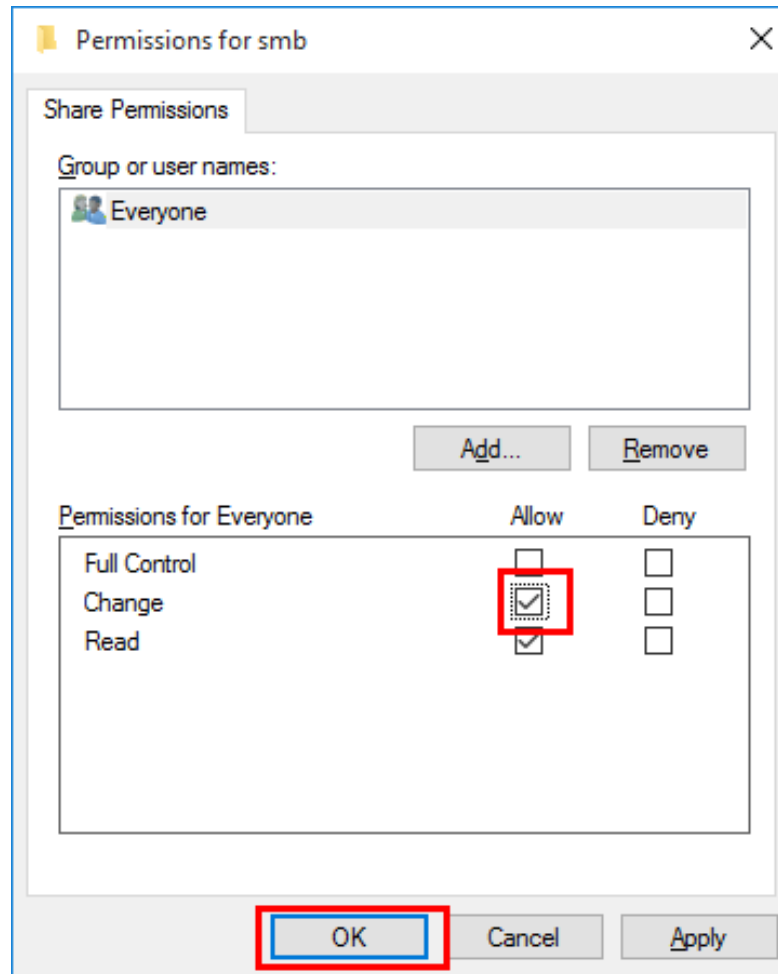


10. Select the [Share this folder] check box, then click [Permissions].



11. In [Group or user names], click [Everyone].

12. Select the check box to permit [Change], then click [OK].



13. Click [OK] or [Close], and close each screen.

The settings on the computer are then completed. The computer, user, and folder names you wrote down in this procedure are required to specify a destination.

In Mac OS

Carry out preparations to send original data scanned by this machine to your computer.

First, create a shared folder that is only to be used to receive scanned original data. Then, check the IP address and user name, and start sharing.

✓ Administrator privileges are required to perform this task.

1. Create a new folder in any place, and name it.

➔ The folder name is required to specify a destination. Write down the folder name.

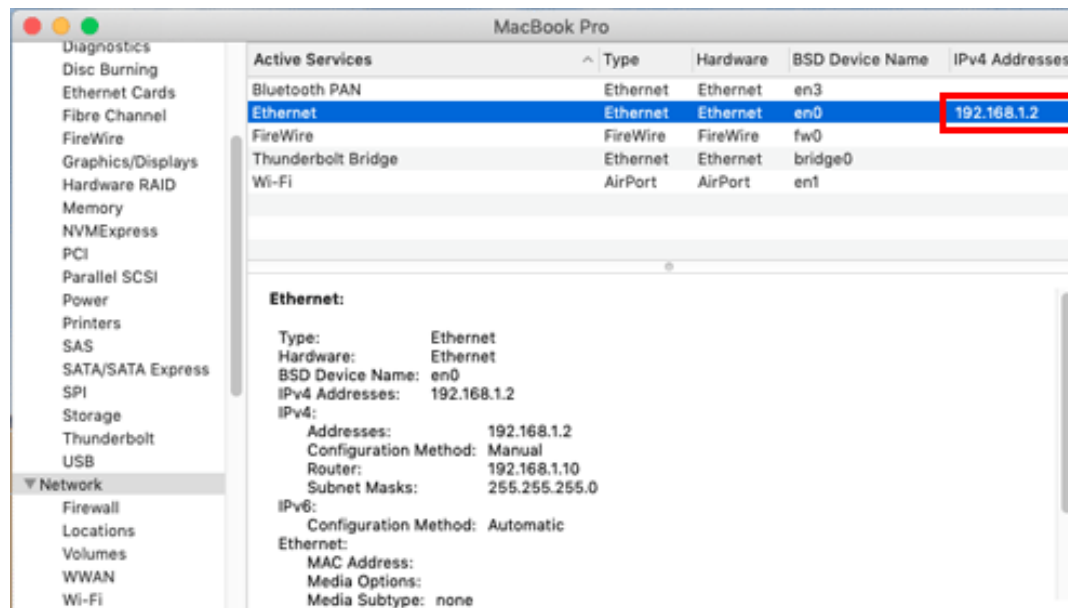
2. Select [About This Mac] in the Apple menu.

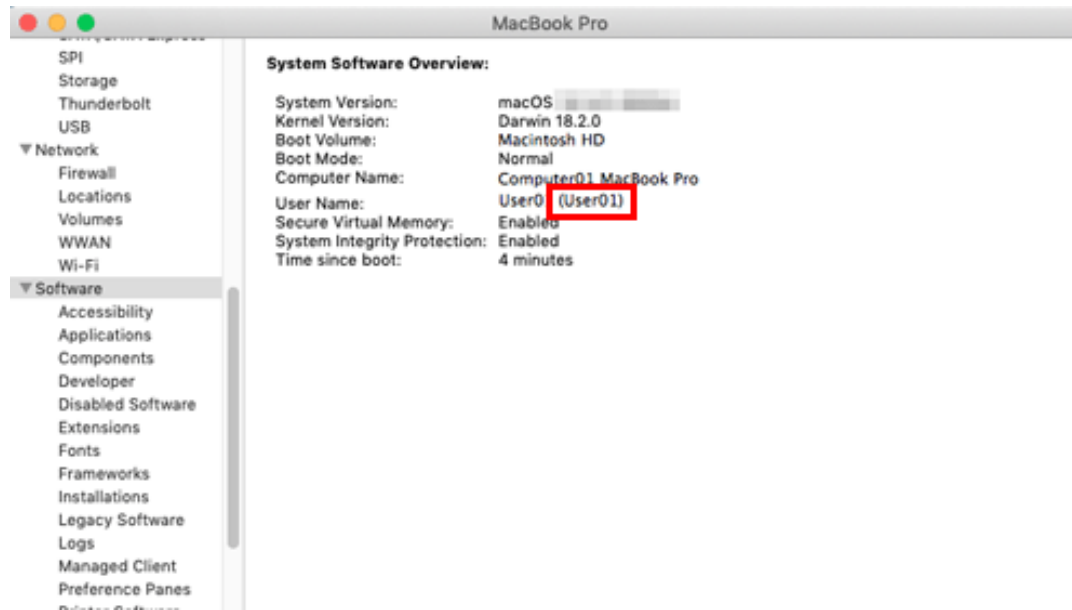
The [About This Mac] screen appears.

3. Click [System Report...].

4. Check the IP address and the name of the user who logs in to the computer.

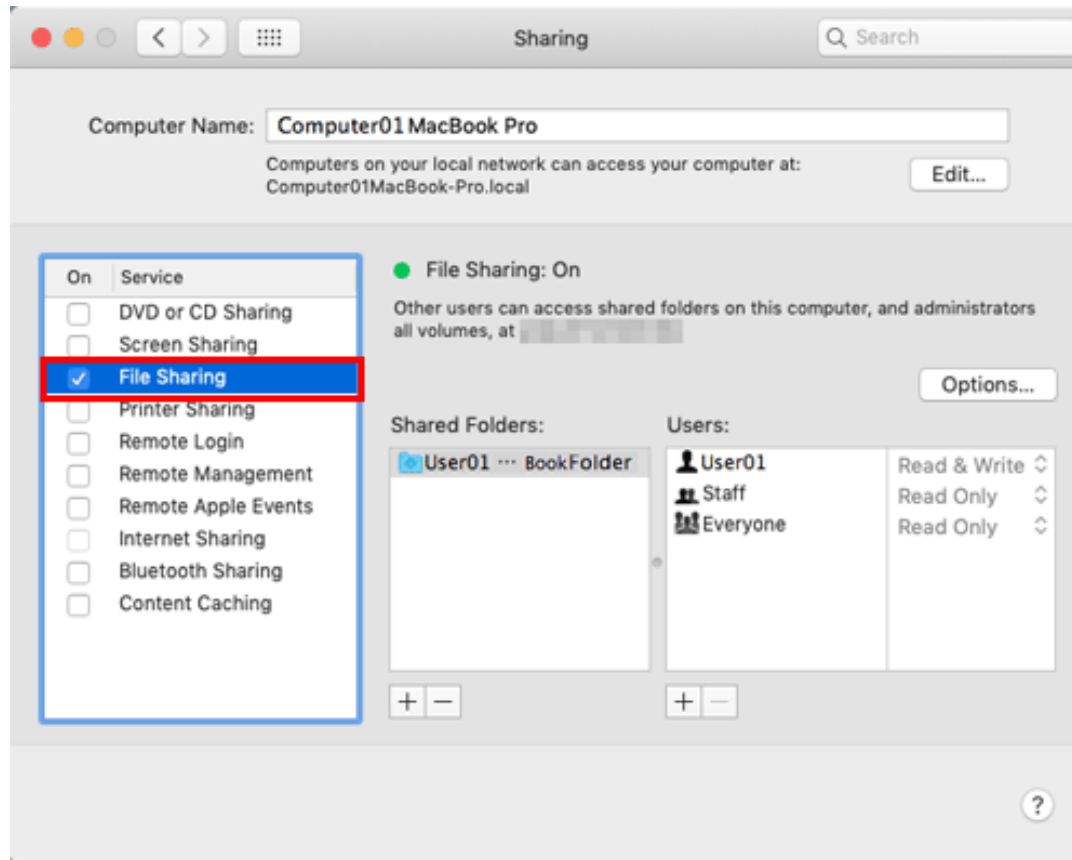
➔ The IP address and user name are required to configure folder sharing settings and specify destinations. Write them both down.





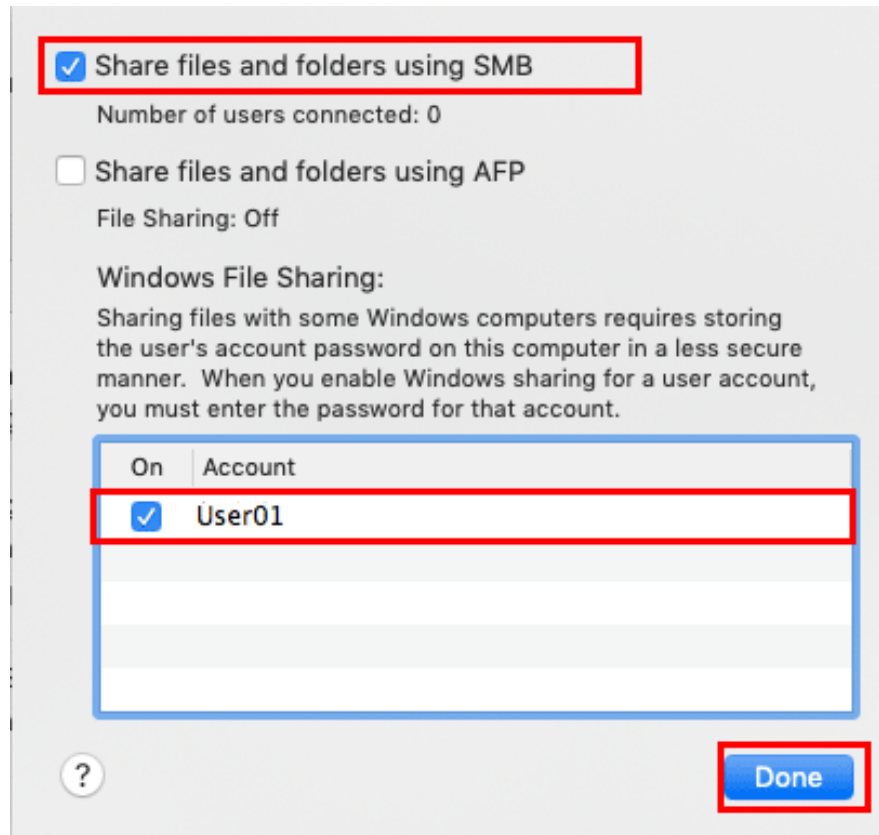
Then, close the window.

5. Select [Preferences...] in the Apple menu.
6. In the [Preferences...] screen, click [Sharing].
7. Select the [File Sharing] check box.



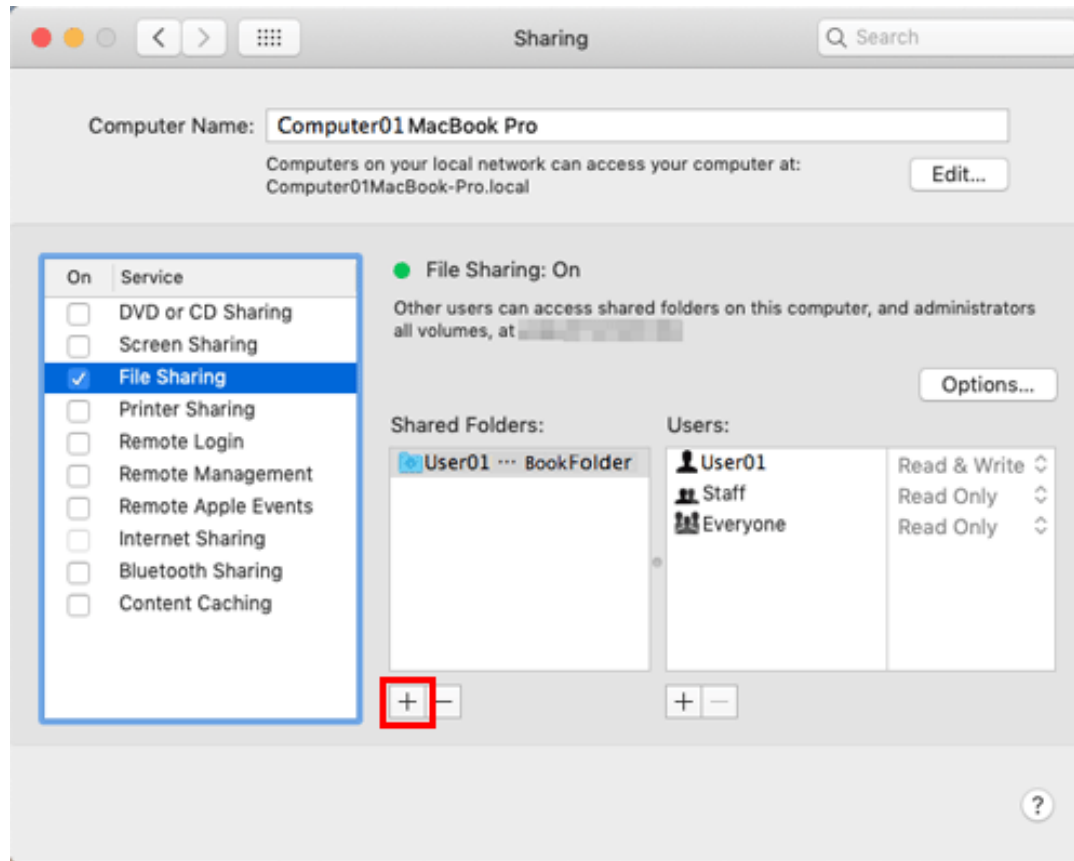
8. Click [Options], and select the [Share files and folders using SMB]. Then, select the log-in user name (displayed name) check box.

➔ When [Authentication] screen appears, enter the password of the login user, then click [OK].

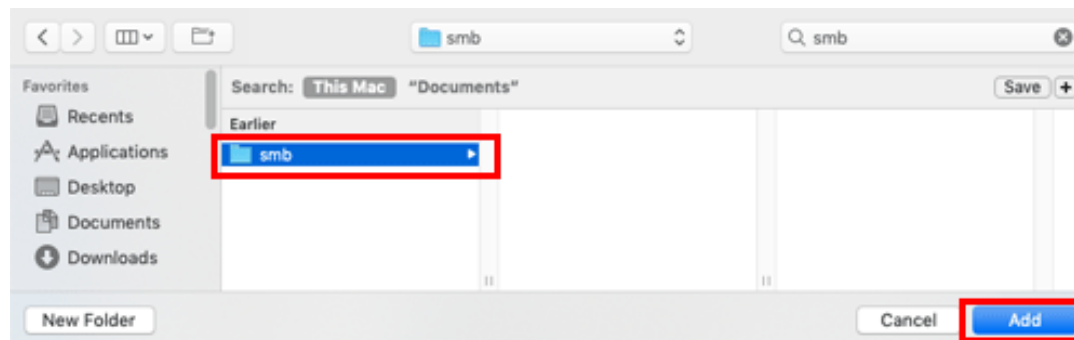


Click [Done], and close the window.

9. Under [Shared Folders:], click [+].

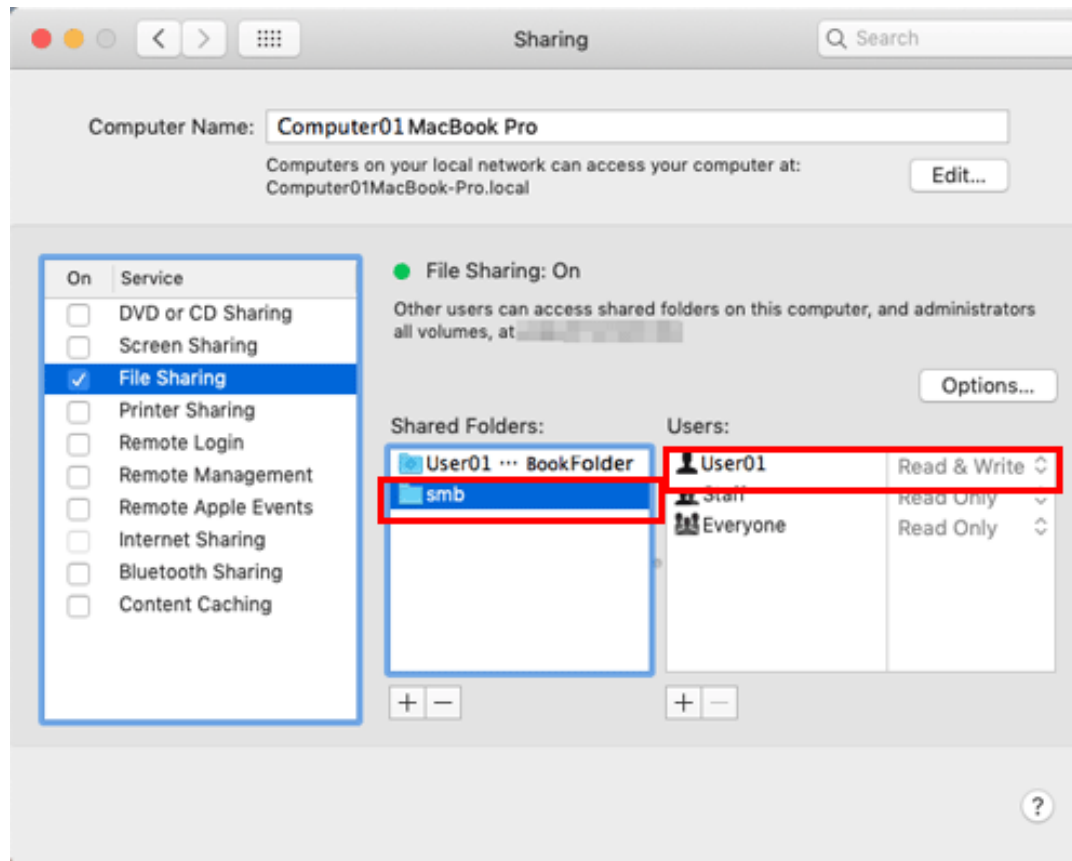


10. On the displayed window, select the created folder, then click [Add].



11. Check the user name and access rights of the created folder.

➔ Check that the user name you wrote down in a previous step is displayed and the access rights are set to [Read & Write].



The settings on the computer are then completed. The IP address, user name, and folder name you wrote down in this procedure are required to specify a destination.

Configuring Settings as Needed

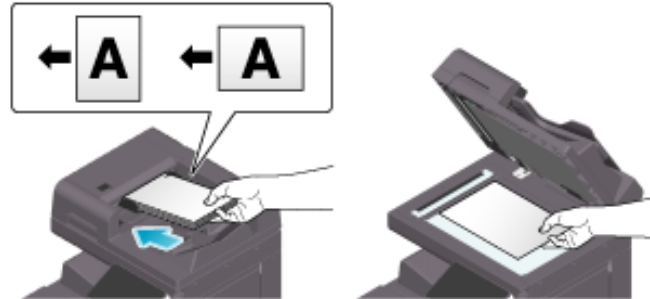
Registering a frequently used destination

Pre-registering a frequently used destination, this machine will save you the trouble of having to enter it each time you send data.

For details on the registration procedure, refer to [Here](#).

Sending (Basic Operation Flow)

1. Load the original.

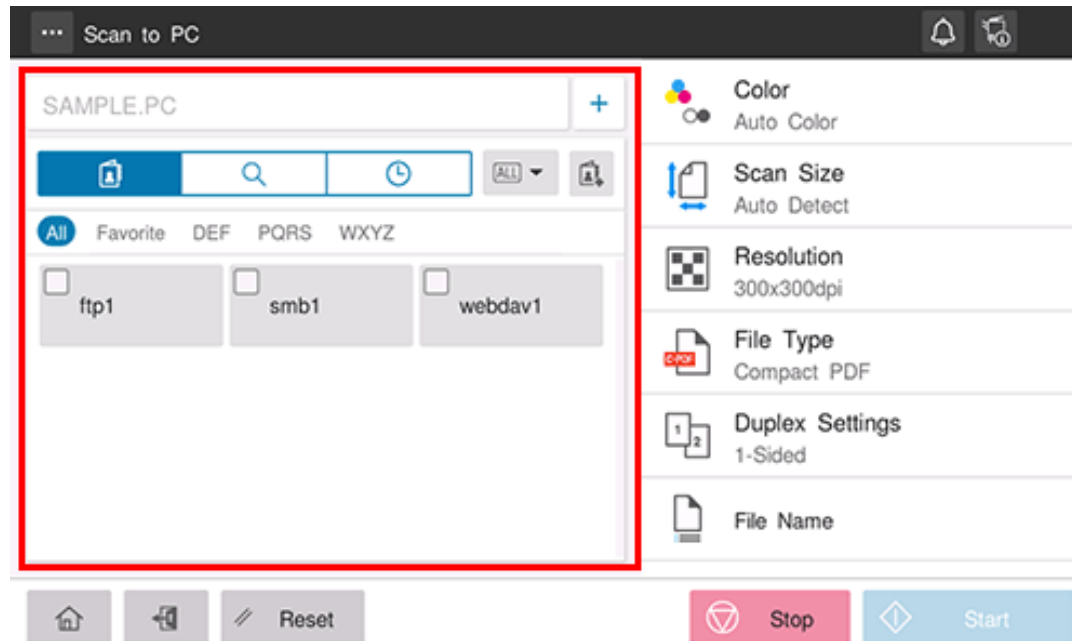


2. Tap [Scan to PC] on the home screen.



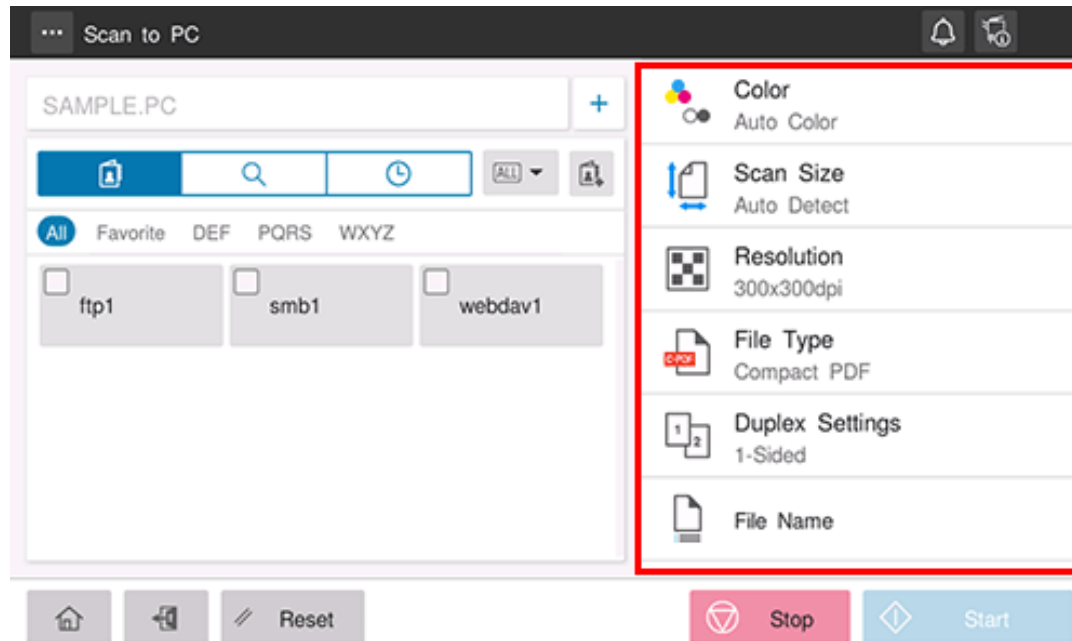
3. Specify the destination.

➡ For details on how to specify a destination, refer to [Here](#).



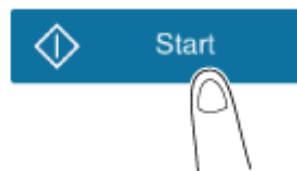
4. Specify transmission options as needed.

➔ For details on option settings, refer to [Here](#).



5. Use the Start key to start transmission.

- ➔ Using the Stop key enables you to stop scanning the original. A list of the currently stopped jobs is displayed. To stop transmission, select the target job from the list, and delete it.





Reference

❖ Changing the default option setting ([Here](#))

Specifying a Destination

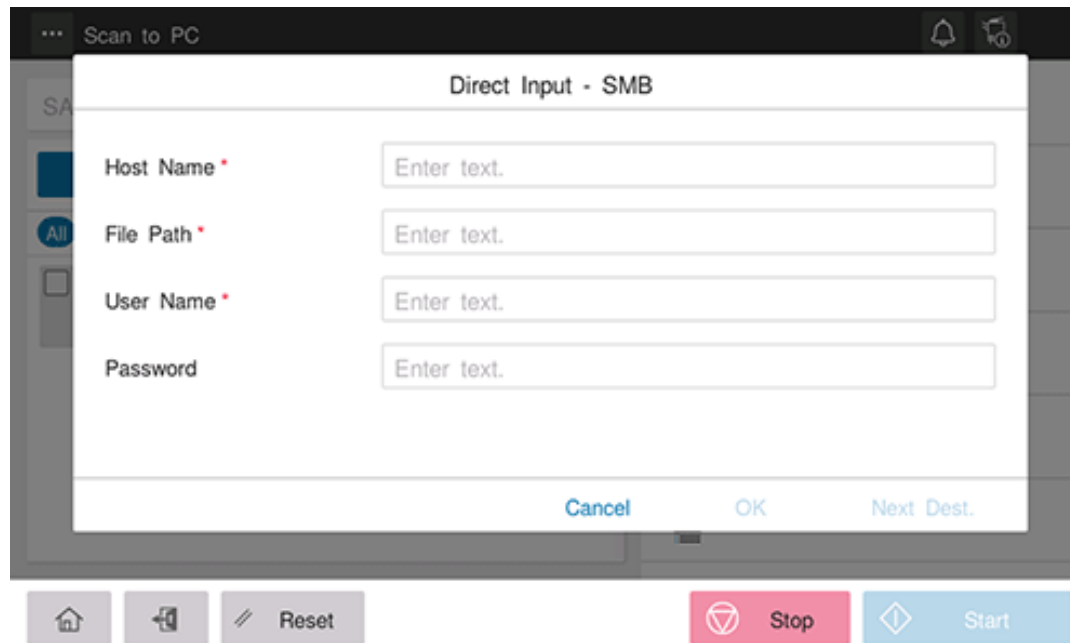
Directly entering the destination

Directly enter destination information.







1. Tap [+].

2. Select [SMB].

3. Enter destination information.




Setting	Description
---------	-------------


[Host Name]	<p>Enter the destination computer name (host name) or full computer name (FQDN) (using up to 253 bytes). If you cannot specify the computer name or full computer name, enter the IP address.</p> <ul style="list-style-type: none">  Example to enter the computer name (host name): "HOME-PC"  Example to enter the full computer name (FQDN): "host1.test.local"  Example to enter the IP address (IPv4): "192.168.1.1"  Example to enter the IP address (IPv6): "fe80::220:6bff:fe10:2f16"
[File Path]	<p>Enter the shared folder name of the host specified in [Host Name] (using up to 255 bytes).</p> <ul style="list-style-type: none">  Example to enter the folder name: "scan"  Example to enter the folder name in the folder: "scan\document"
[User Name]	Enter the name of a user with folder access rights (using up to 64 characters).
[Password]	Enter the password (using up to 64 characters, excluding double quotation marks ").

4. Tap [OK].


Using Address Book

Selecting the Destination tab () displays a list of destinations registered on this machine. Switch the display using an index, and specify the target destination. For details, refer to [Here](#).

Searching for the registered destination

Tapping the Search tab () displays the destination search screen. If a large number of destinations are registered, the system searches for the registered name of the destination or characters of the address to find the target destination. For details, refer to [Here](#).

Using Job History

Tapping the History tab () displays a list of transmission logs. Specify the target destination from the previous five job histories. For details, refer to [Here](#).

Sending to Your Computer (Scan to Home)

About Scan to Home

If the user's home folder is registered in Active Directory while user authentication by Active Directory is installed on this machine, the [Home] key is displayed in the address book of the [Scan to PC] screen when you log in to this machine.

By selecting the [Home] key as the destination, you can easily perform SMB Send using your Home folder as a destination.

Preparation required to use this function (for the administrator)

Configure the settings to use the Scan to Home function.

For details on the setting procedure, refer to [Here](#).

Operation flow

1. Load the original.
2. Enter user information, and log in to this machine.
 - ➔ For details on how to log in, refer to [Here](#).
3. Tap [Scan to PC] on the home screen.



4. Select [Home].

5. Specify transmission options as needed.

6. Use the Start key to start transmission.

- ➔ Using the Stop key enables you to stop scanning the original. A list of the currently stopped jobs is displayed. To stop transmission, select the target job from the list, and delete it.



Sending in the Single Sign-on Environment of Active Directory

About single sign-on

When user authentication by Active Directory is enabled, single sign-on can be set on this machine.

If you log in to this machine using the external server authentication of Active Directory, you can send data to the shared folder without re-entering the authentication information (user ID and password) at SMB sending.

Preparation required to use this function (for the administrator)

Enable the single sign-on setting.

For details on the setting procedure, refer to [Here](#).

Operation flow

1. Load the original.
2. Tap [Scan to PC] on the home screen.



3. Directly enter destination information.

➔ You do not need to enter the user ID and password. For details on how to specify a destination, refer to [Here](#).

4. Specify transmission options as needed.

5. Use the Start key to start transmission.

- ➔ Using the Stop key enables you to stop scanning the original. A list of the currently stopped jobs is displayed. To stop transmission, select the target job from the list, and delete it.

