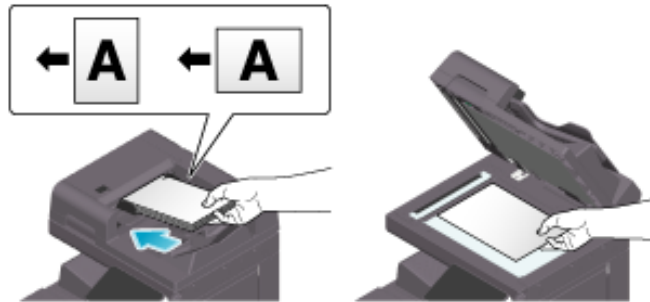


## Copying (Basic Operation Flow)

---

### 1. Load the original.

➔ Select scan settings to suit the target original. For details on the scan settings, refer to [Here](#).

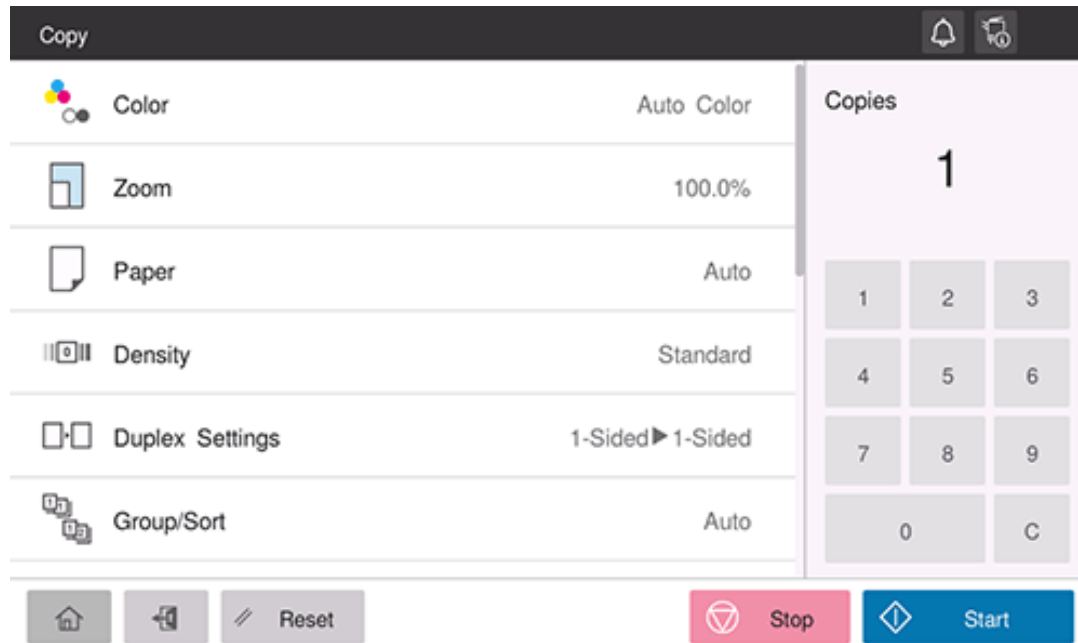


### 2. Tap [Copy] or [Quick Copy] on the home screen.



### 3. Set copy options as needed.

➔ For details on option settings, refer to [Here](#).



4. If necessary, specify the number of copies using the keypad.

5. Use the Start key to start copying.





## Related setting

❖ [Basic Setting] - [Default Copy Settings] ([Here](#))



## Reference

❖ Canceling Copy ([Here](#))

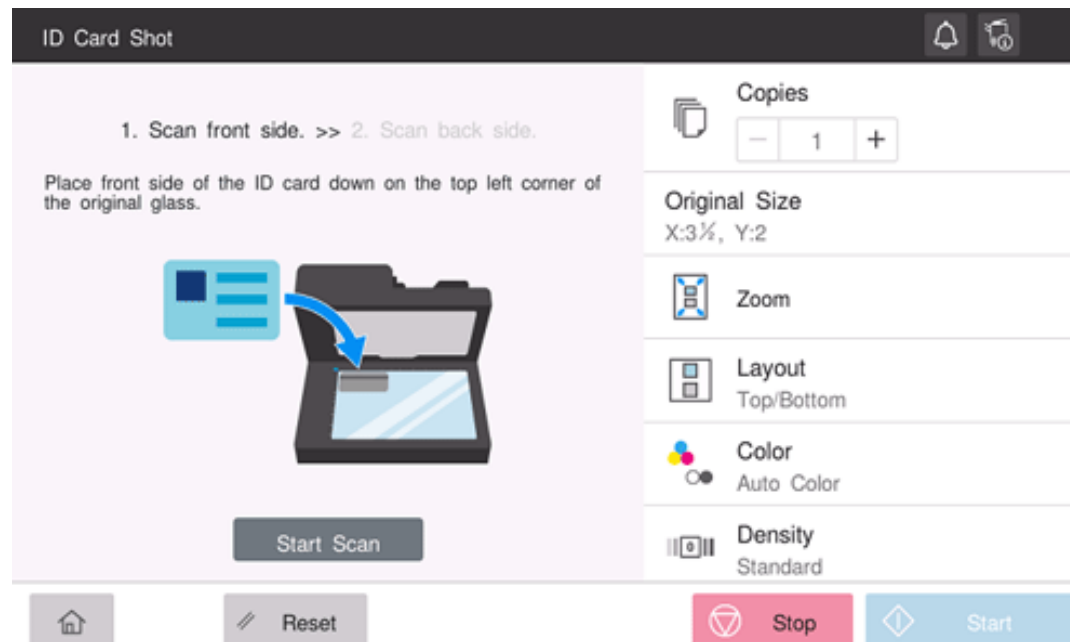
## Copying a Card (Card Shot)

To copy various cards such as a health insurance card and license, use the ID card copy mode. By carrying out a simple operation, you can copy the front and back of a card side by side, on the same side of a single sheet.



1. Tap [Card Shot] on the home screen.



2. Place a card on the Original Glass.

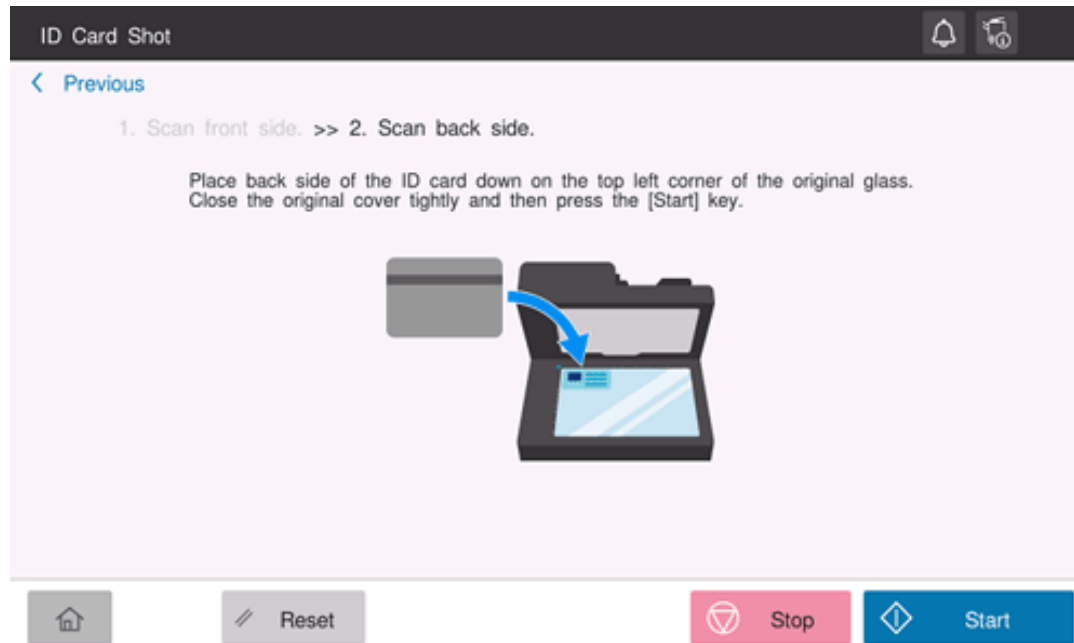


**3. Set each item to suit the finishing image.**

<b>Setting</b>	<b>Description</b>
[Copies]	Specify the number of copies.
[Original Size]	Specify the registered size, or enter the desired size. When specifying the desired size, select [Free size], and enter the size.
[Zoom]	Select a zoom ratio for copying.  [Full Size]: Copy by enlarging according to the paper size.  [x1.0]: Copy with the same size as the card.
[Layout]	Select how to arrange the front and back sides of a card on paper.
[Color]	Select a copy color.
[Density]	Adjust the density of a copy image.
[Original Type]	Select the setting appropriate for the contents of the original.
[Paper]	Specify the paper tray.

**4. Tap [Start Scan] to scan the front side of the card.**

**5. Turn the card over, and place it on the **Original Glass**.**



6. Use the Start key to scan the back side of the card and start copying.



### Related setting

Card Shot ([Here](#))

## Canceling Copy

---

To cancel copy, use the Stop key to stop copying.



A list of the currently stopped jobs is displayed. Select the target job from the list, and delete it.

Stop Printing

Select job you wish to delete and touch [Delete].  
Press [Start] to restart the suspended job.

Stopped Jobs

No.	User Name	Status	File Name	Time	Original	Copies
0040	COPY	Stop Printing		01:17	1	0

Delete