

SMB Send Function

This function converts original data scanned by this machine into a file supported by a computer, and sends it to a shared folder of a computer or server. It also sends a file to your computer as well as to a file server that is usually used to transfer files, which enables sharing of the file between computers.



Preparation Flow

Preparing a destination computer (Windows 7/8.1/10 or Mac OS 10.8 or later)

Checking the computer and user names

Check the destination computer name and available user name.

Creating a shared folder

Create a destination folder, and start sharing.



Connecting this machine to the network

Checking a LAN cable for connection

Checking the network settings

Check that an IP address is assigned to this machine.



Prepare the environment required to use the SMB Send function

Enabling the SMB Send function

You can use this function with the default settings unless otherwise requested.



Configuring the machine to your environment

Registering a frequently used destination

This will save you the trouble of entering a destination each time you send data.

Using the WINS server

If WINS (Windows Internet Name Service) is used for a communication with a device on the network, register the WINS server.

Using LLMNR

When using LLMNR (Link-local Multicast Name Resolution) for a communication with a device on the network, enable LLMNR. (You can use this function with the default settings unless otherwise requested.)

Using DFS

If DFS (Distributed File System) is installed in your environment, configure its setting. (You can use this function with the default settings unless otherwise requested.)



Preparation finished

Computer Side: Steps Required to Use this Function


In Windows 7/8.1/10:

Carry out preparations to send original data scanned by this machine to your computer.

First, check the name of your computer and that of the login user.

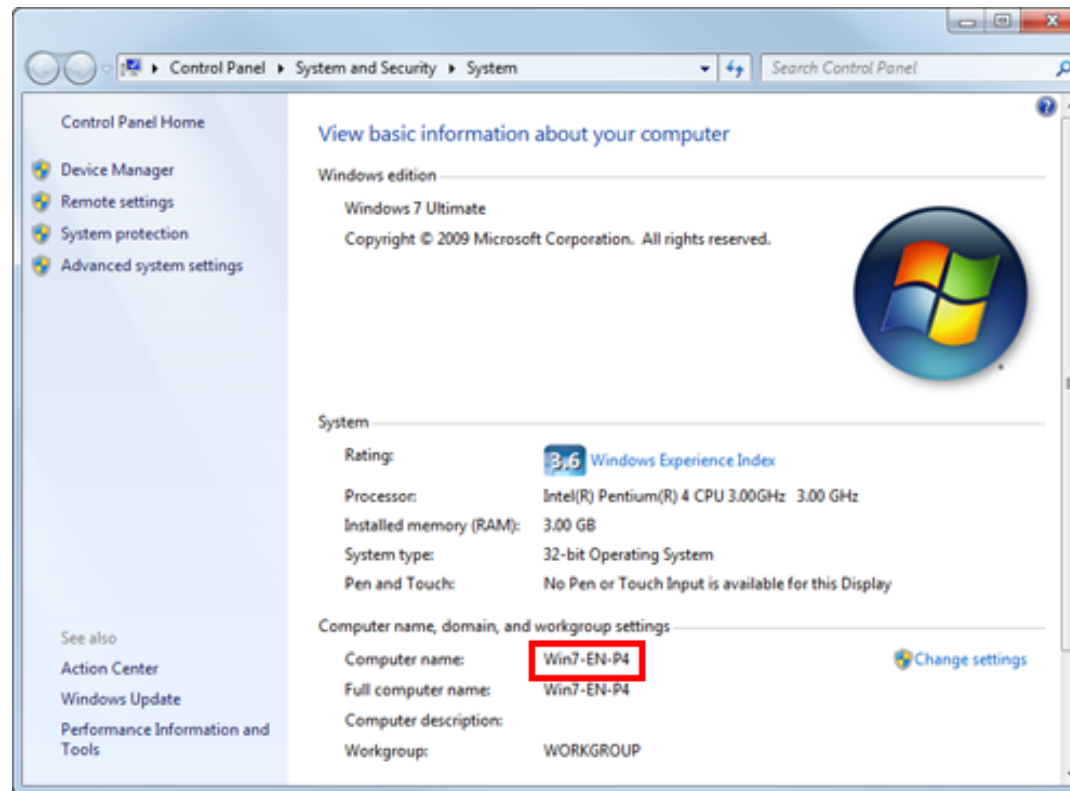
✓ Administrator privileges are required to perform this task.

1. From the Start menu, click [Computer] - [System properties].

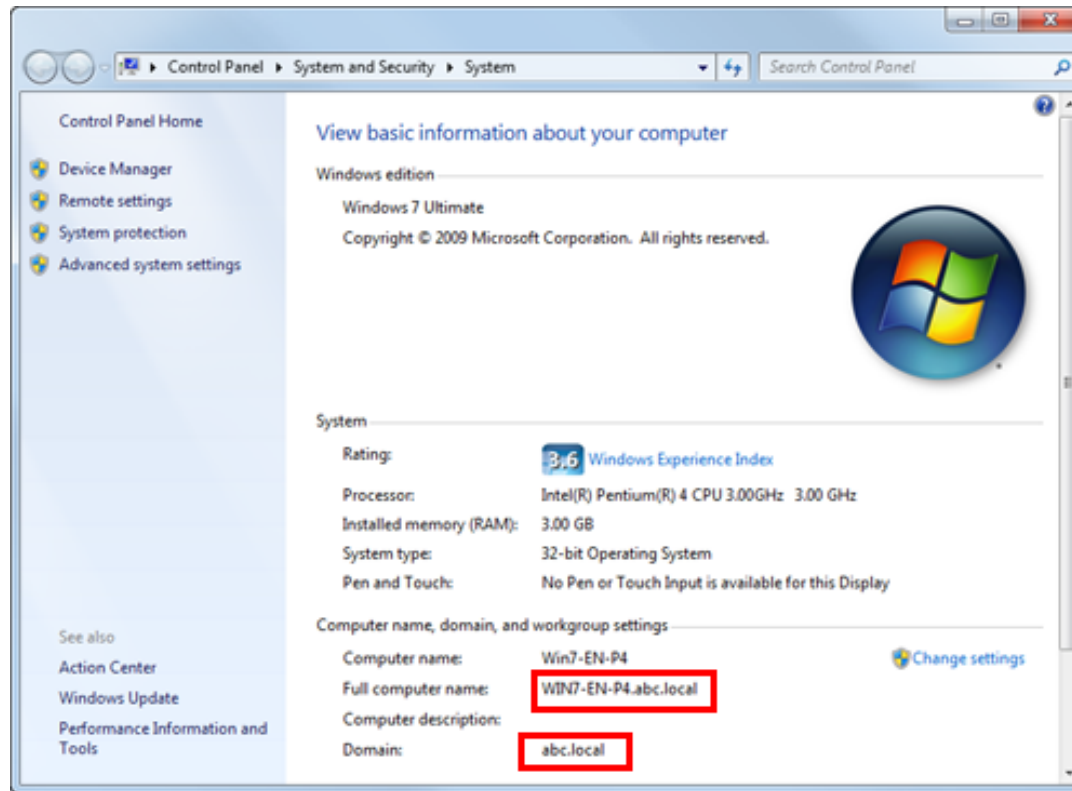
➡ In Windows 8.1/10, while pressing the [Windows] () key, press the [X] key, and then click [System properties] in the displayed menu.

2. Check [Computer name].

➡ The computer name is required to specify a destination. Write down the computer name.




➡ For domain user, the domain name is required to specify a destination along with the user name. Write down the domain name.



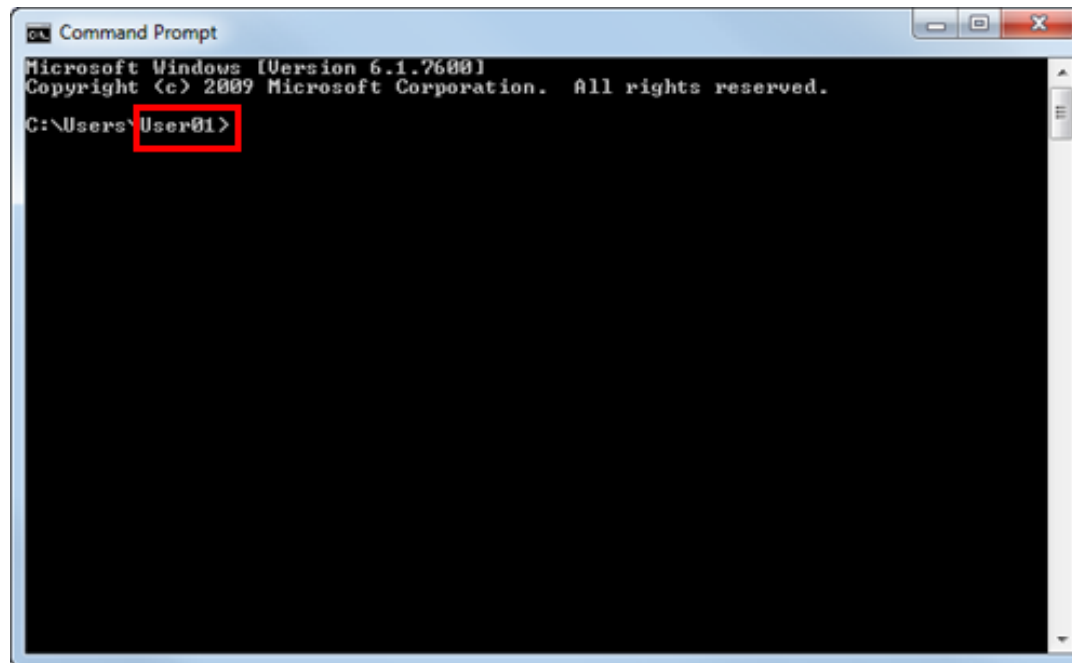
Then, close the window.

3. From the Start menu, click [All Programs] - [Accessories] - [Command Prompt].

➡ In Windows 8.1/10, while pressing the [Windows] () key, press the [X] key, and then click [Command Prompt] in the displayed menu.

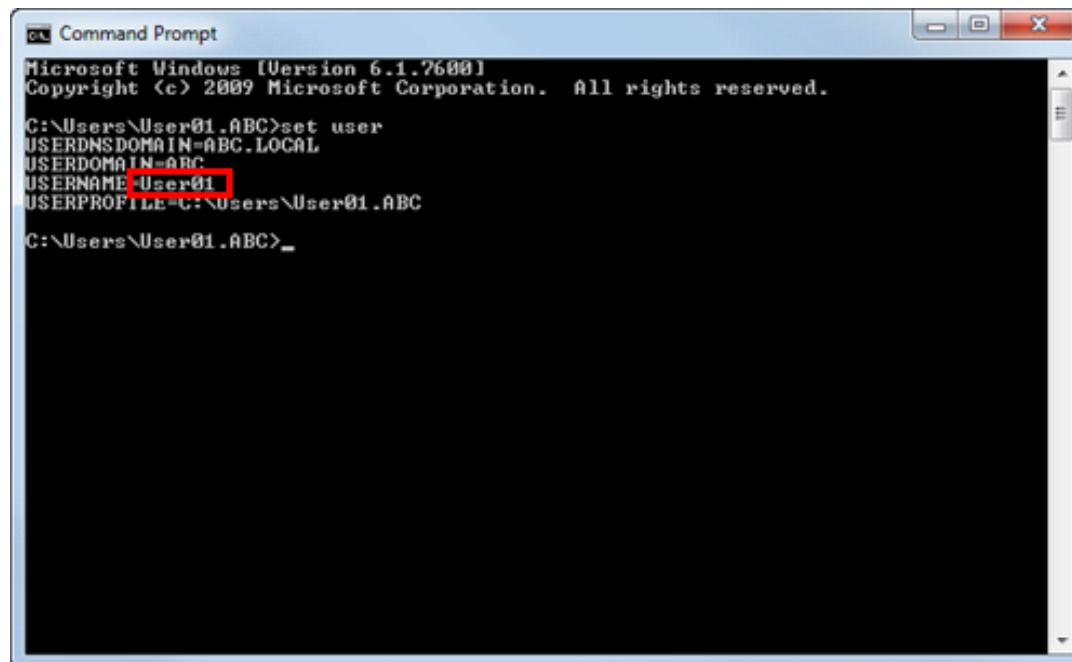
4. Check the name of the user who logs in to the computer.

➡ The user name is required to configure folder sharing settings and specify destinations. Write down the user name.



```
Command Prompt
Microsoft Windows [Version 6.1.7600]
Copyright (c) 2009 Microsoft Corporation. All rights reserved.
C:\Users\User01>
```

➡ For domain users, type in "set user", and check the user name.




```
Command Prompt
Microsoft Windows [Version 6.1.7600]
Copyright (c) 2009 Microsoft Corporation. All rights reserved.
C:\Users\User01.ABC>set user
USERDNSDOMAIN=ABC.LOCAL
USERDOMAIN=ABC
USERNAME=User01
USERPROFILE=C:\Users\User01.ABC
C:\Users\User01.ABC>
```

Then, close the window.

Next, create a folder where to send the scanned original data, and start sharing.

5. From the Start menu, click [Control Panel] - [Network and Internet] - [Network and Sharing Center] - [Change advanced sharing settings].

➡ In Windows 8.1/10, while pressing the [Windows] () key, press the [X] key, and then click [Control Panel] - [Network and Sharing Center] - [Change advanced sharing settings] in the displayed menu.

6. In the [Advanced sharing settings] screen, click [Turn on file and printer sharing].

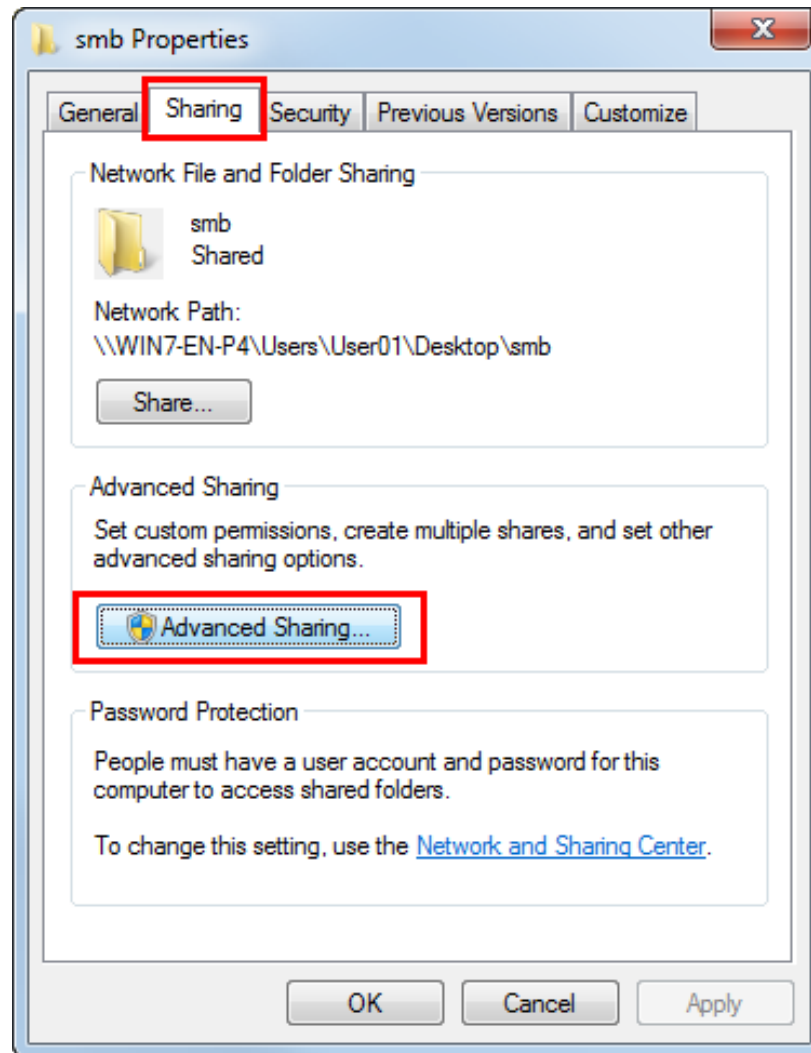
Click [Save Changes], and close the window.

7. Create a new folder in any place, and name it.

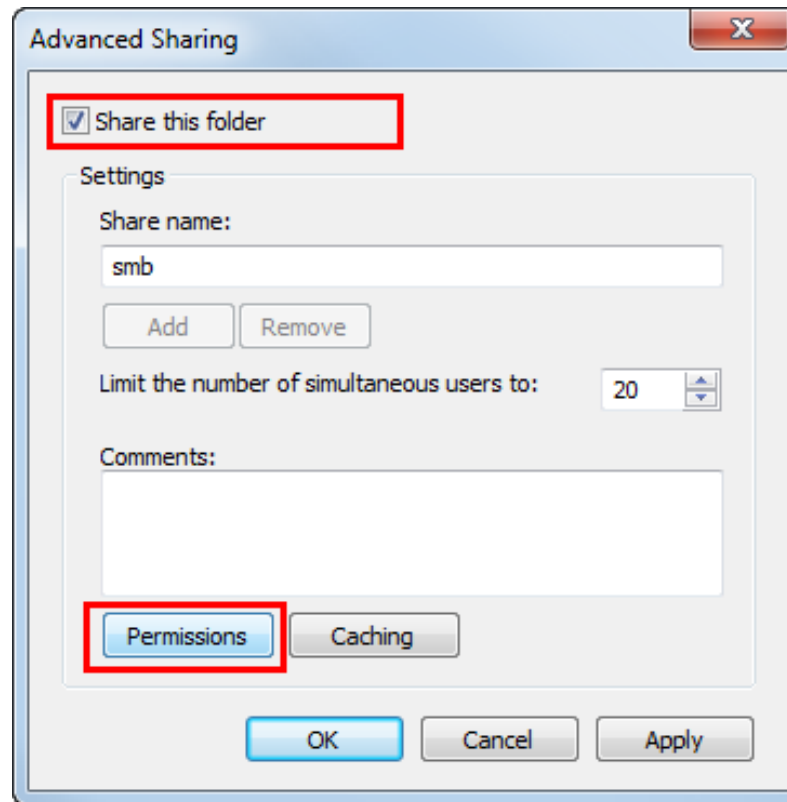
➡ The folder name is required to specify a destination. Write down the folder name.

8. Right-click on the folder, then click [Properties].

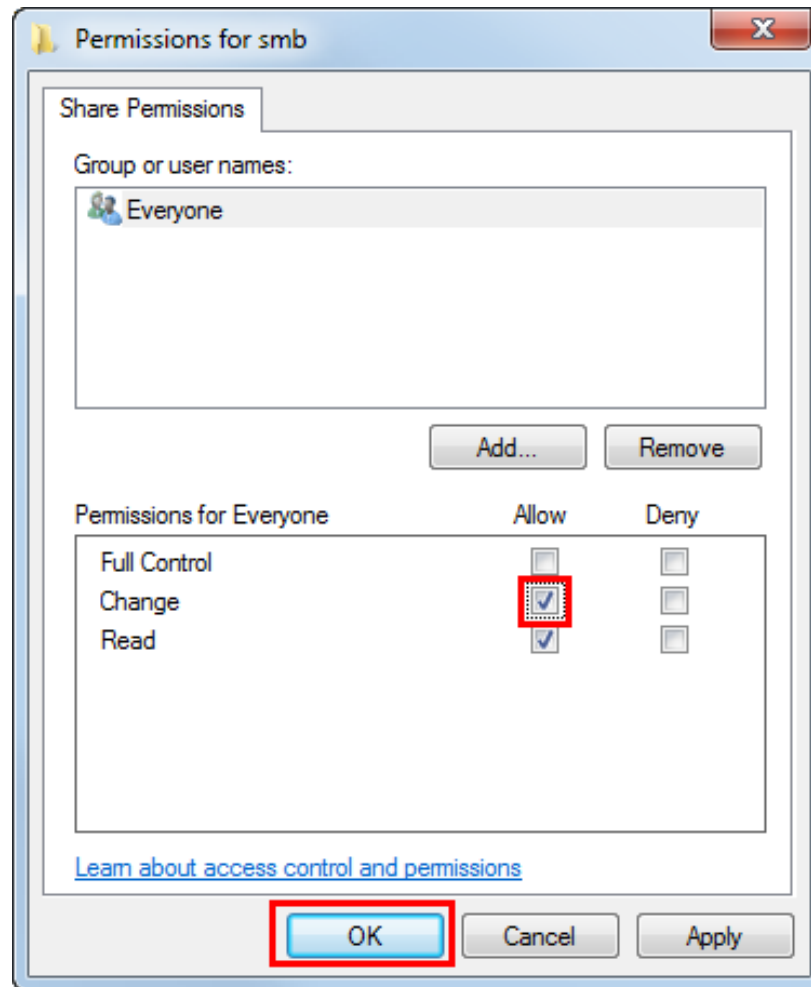
9. Click the [Sharing] tab, and also click [Advanced Sharing].



10. Select the [Share this folder] check box, then click [Permissions].



11. In [Group or user names], click [Everyone].
12. Select the check box to permit [Change], then click [OK].



13. Click [OK] or [Close], and close each screen.

The settings on the computer are then completed. The computer, user, and folder names you wrote down in this procedure are required to specify a destination.

In Mac OS 10.8 or later:

Carry out preparations to send original data scanned by this machine to your computer.

First, create a shared folder that is only to be used to receive scanned original data. Then, check the IP address and user name, and start sharing.

✓ Administrator privileges are required to perform this task.

1. Create a new folder in any place, and name it.

➡ The folder name is required to specify a destination. Write down the folder name.

2. Select [About This Mac] in the Apple menu.

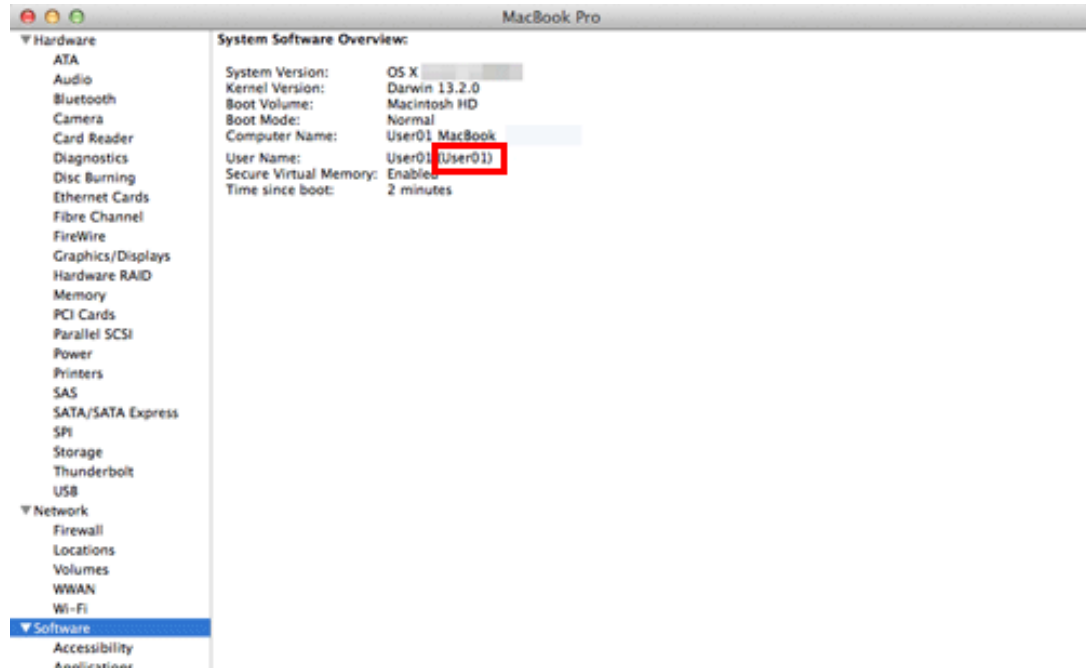
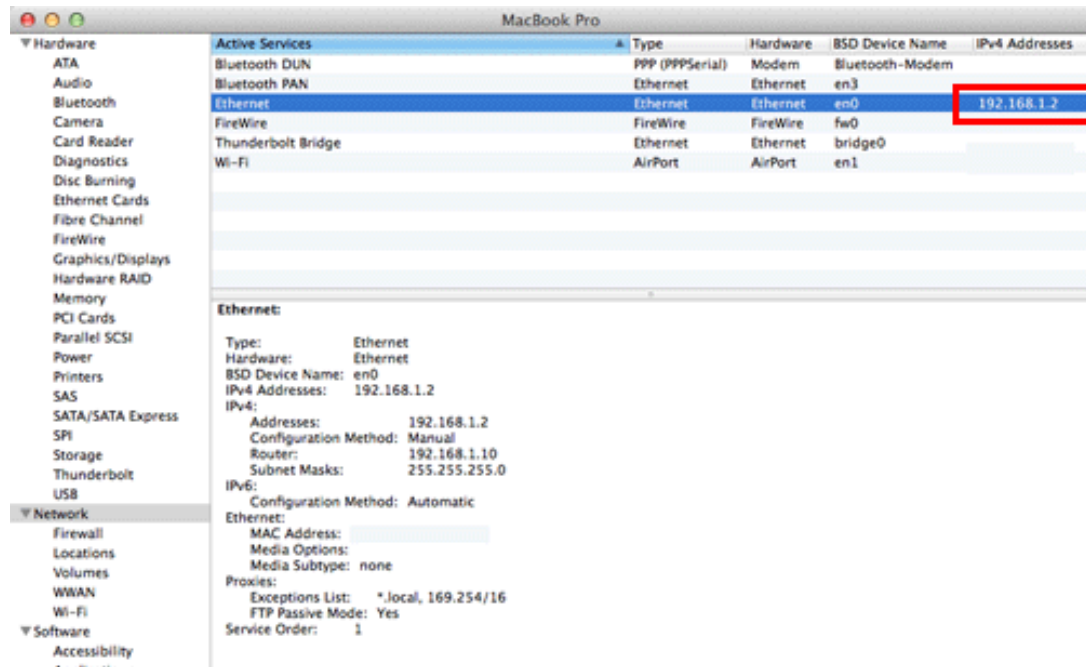
The [About This Mac] screen appears.

3. Click [System Report...].

➡ In Mac OS 10.8/10.9, click [More Info...], then click [System Report...].

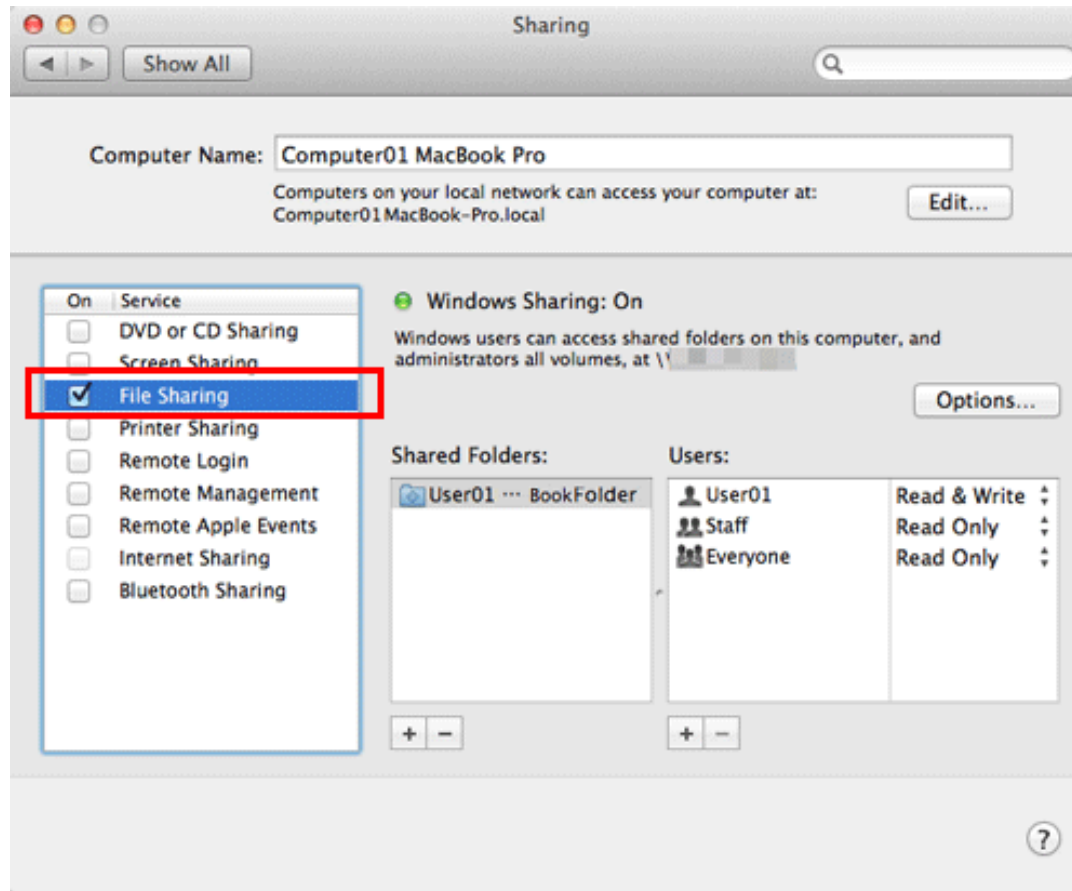
4. Check the IP address and the name of the user who logs in to the computer.

➡ The IP address and user name are required to configure folder sharing settings and specify destinations. Write them both down.



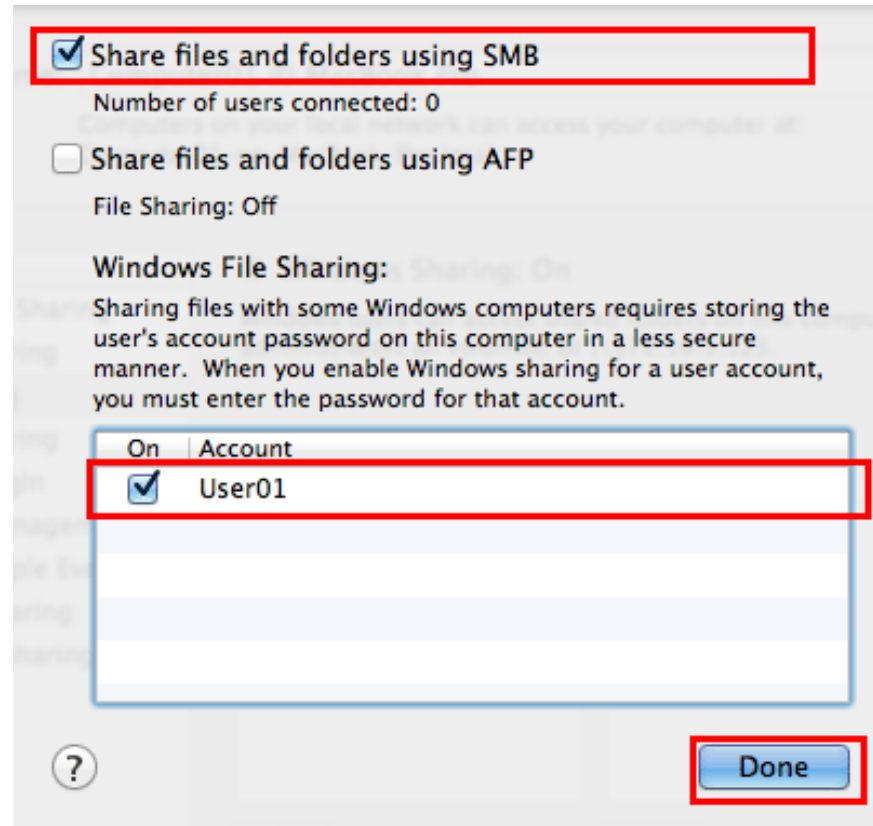
Then, close the window.

5. Select [Preferences...] in the Apple menu.
6. In the [Preferences...] screen, click [Sharing].
7. Select the [File Sharing] check box.



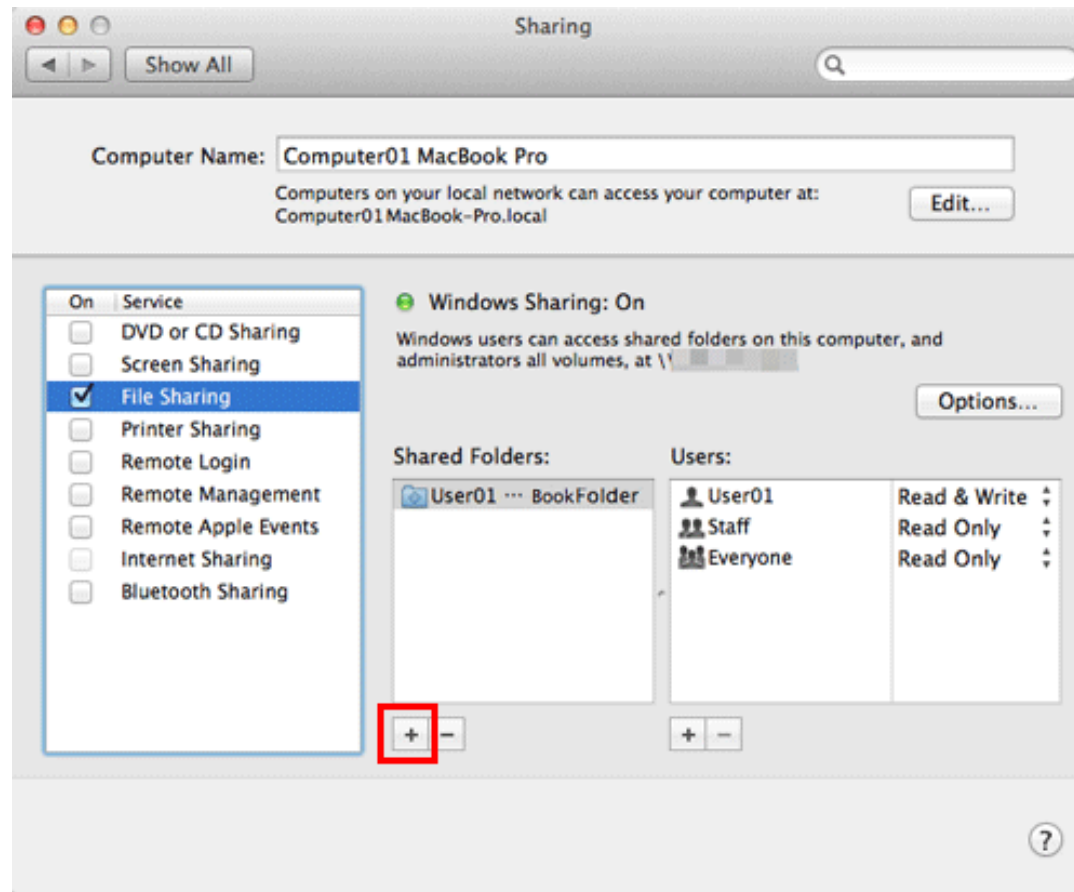
8. Click [Options], and select the [Share files and folders using SMB]. Then, select the log-in user name (displayed name) check box.

➡ When [Authentication] screen appears, enter the password of the login user, then click [OK].

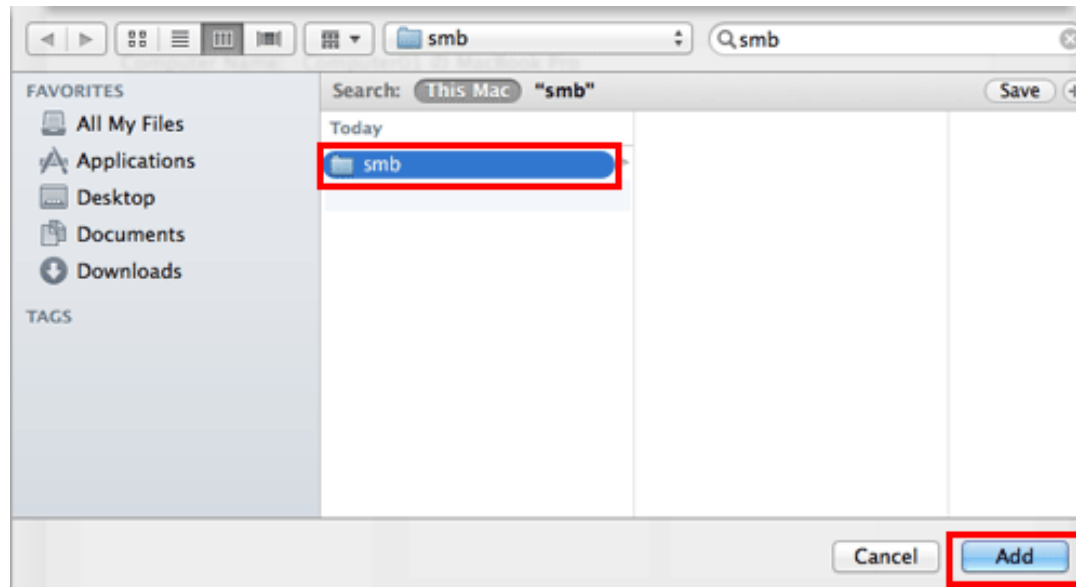


Click [Done], and close the window.

9. Under [Shared Folders:], click [+].

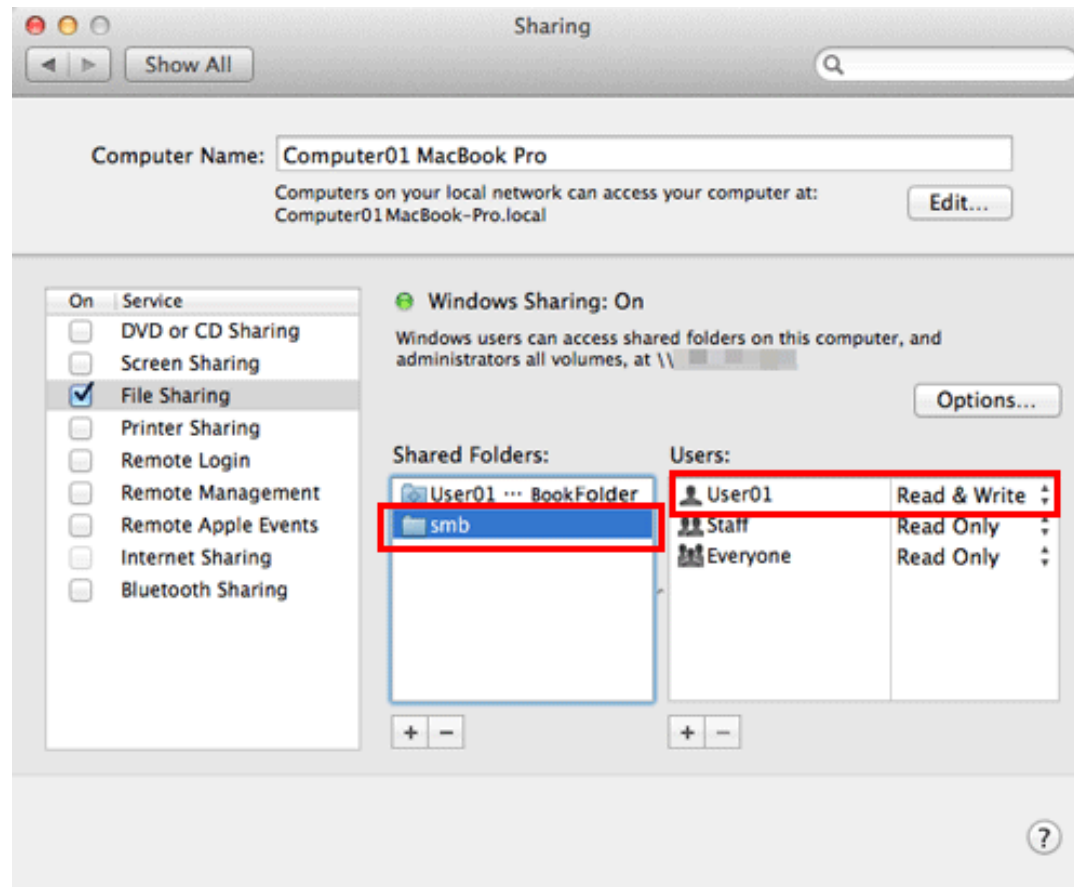


10. On the displayed window, select the created folder, then click [Add].



11. Check the user name and access rights of the created folder.

- ➡ Check that the user name you wrote down in a previous step is displayed and the access rights are set to [Read & Write].

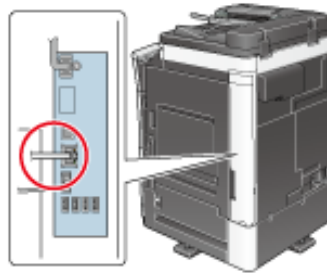


The settings on the computer are then completed. The IP address, user name, and folder name you wrote down in this procedure are required to specify a destination.

Machine Side: Steps Required to Use this Function (for the Administrator)

Checking a LAN cable for connection

Check that a LAN cable is connected to the LAN port of this machine via the network.



Checking the network settings

Check that an IP address is assigned to this machine. Tap [Utility] - [Device Information], and check that an IP address is displayed.



Reference

❖ If no IP address is displayed, you need to configure the network. For details, refer to [Here](#).

Configuring the SMB Send environment

Enable the SMB Send function. (You can use this function with the default settings unless otherwise requested.)

How to configure the setting is explained using **Web Connection**. For details, refer to [Here](#).



Tips

In Mac OS, configure the following setting.

- ❖ Set [SMB Authentication Setting] to [NTLM v1/v2]. For details, refer to [Here](#).
- ❖ Synchronize the date and time, including the time zone, between the machine and your computer. For details on how to set the date and time of this machine, refer to [Here](#).

Option Settings

Registering a frequently used destination

Pre-register commonly-used computers and servers as destinations on this machine; it will save having to carry out many steps in order to enter an address for each transmission.

For details on how to register, refer to [Here](#).

Using the WINS server

If WINS (Windows Internet Name Service) is used for a communication with a device on the network, register the WINS server.

The registration process is explained using **Web Connection**. For details, refer to [Here](#).

Using LLMNR

When using LLMNR (Link-local Multicast Name Resolution) for a communication with a device on the network, enable LLMNR. (You can use this function with the default settings unless otherwise requested.)

LLMNR is a protocol to resolve the name of the device on the network in a local network environment with no DNS server. This option is only compatible with Windows computers.

How to configure the setting is explained using **Web Connection**. For details, refer to [Here](#).

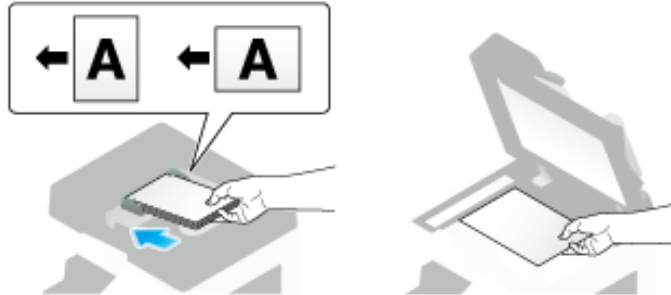
Using in the DFS environment

If DFS (Distributed File System) is installed in your environment, enable DFS. (You can use this function with the default settings unless otherwise requested.)

How to configure the setting is explained using **Web Connection**. For details, refer to [Here](#).

How to Send

1. Load the original.



2. Tap [Scan/Fax].



3. Specify the destination computer, user, and folder names.

- ➡ For details on how to specify a destination, refer to [Here](#).
- ➡ Specifying multiple destinations carries out computer sending and fax transmission simultaneously.



➡ If necessary, you can change the display of the main screen in fax/scan mode (default: [Address Book]). For details, refer to [Here](#).

4. Configure Scan option settings as necessary.

➡ For details on configuring option settings, refer to the respective columns of the following table.

| Purpose | Reference |
|---|----------------------|
| To configure basic options such as color and original size | Here |
| To configure options to scan various types of originals such as various sizes and books | Here |
| To adjust the image quality level of the original such as colored background (newspaper, etc.) or light printing original | Here |
| To print date/time and page number | Here |
| Other option settings | Here |

5. Press the **Start** key.

➡ Tap [Check Setting] before sending, and check the destination and settings as necessary.

➡ To redo operations for specifying destinations or option settings, press the **Reset** key.



Transmission begins.

➡ If you press the **Stop** key while scanning an original, the scanning process stops, and a list of stopped jobs appears. To cancel scanning of the original, delete inactive jobs from the list.



Reference

- ❑ Using the preview function, you can check the finishing status before sending. For details on how to send, refer to [Here](#).
- ❑ It is convenient to register commonly-used destinations in a scan/fax program. For details on the program, refer to [Here](#).

Sending to Your Computer (Scan to Home)

Scan to Home

If you log in to this machine while user authentication is installed on this machine and Active Directory is used as an authentication server, the [Home] key appears in the [Address Book] screen.

To send scanned original data to a shared folder on the server or your computer, select the [Home] key.



Operations required to use this function (for the administrator)

Enable the Scan to Home function.

How to configure the setting is explained using **Web Connection**. For details, refer to [Here](#).

Operation flow

1. Load the original.

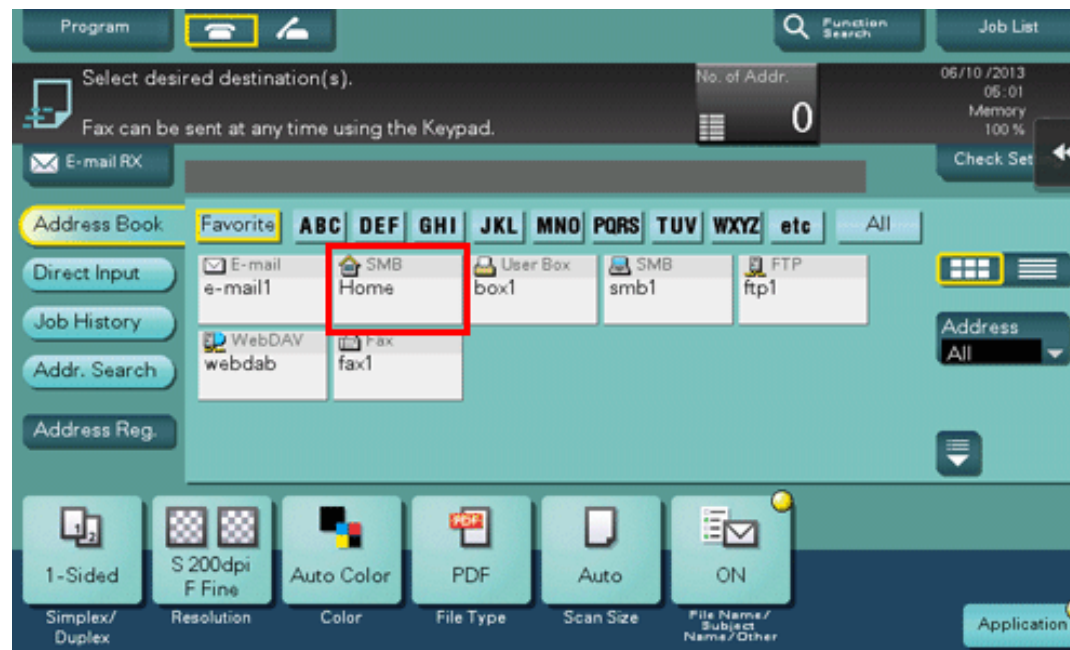
2. Enter user information, and log in to this machine.

➡ For details on how to log in, refer to [Here](#).

3. Tap [Scan/Fax].



4. Select [Home].



5. Configure Scan option settings as necessary.

6. Press the **Start** key.

- ➡ Tap [Check Setting] before sending, and check the destination and settings as necessary.
- ➡ To redo operations for specifying destinations or option settings, press the **Reset** key.



Transmission begins.

- ➡ If you press the **Stop** key while scanning an original, the scanning process stops, and a list of stopped jobs appears. To cancel scanning of the original, delete inactive jobs from the list.

Notifying Where to Save Original Data by E-mail (URL Notification)

URL notification

Send an E-mail, which contains a destination specifying where to save original data, to a specified E-mail address after scan transmission or Save in User Box has been ended.

For example, when using a shared folder, FTP server, or WebDAV server to transfer a file between project members, specify an E-mail address for the mailing list as a destination of a notification E-mail, enabling easy information sharing.



Tips

❖ The Scan-to-Send function, which can notify where original data is saved, is available only for SMB Send, FTP Send, WebDAV Send, and Save in User Box.

Operations required to use this function (for the administrator)

Prepare the E-mail environment.

How to configure the setting is explained using **Web Connection**. For details, refer to [Here](#).

Operation flow

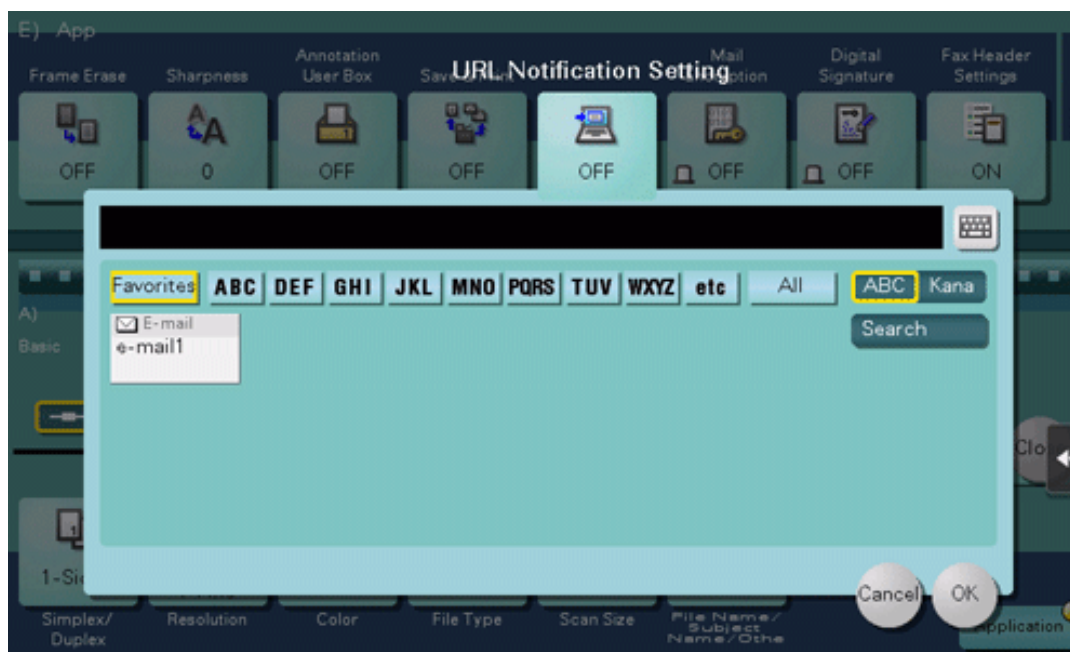
1. Load the original.
2. Tap [Scan/Fax].



3. Specify a destination computer.

4. Tap [Application] - [App] - [URL Notification Setting], then directly enter the E-mail address to notify the storage location or select the desired E-mail address from the address book.

➡ The Scan function can notify only one E-mail address. If the mailing list is used, it is convenient to register its E-mail address as a destination.



5. Press the **Start** key.

➡ Tap [Check Setting] before sending, and check the destination and settings as necessary.

➡ To redo operations for specifying destinations or option settings, press the **Reset** key.



Transmission begins.

- ➡ If you press the **Stop** key while scanning an original, the scanning process stops, and a list of stopped jobs appears. To cancel scanning of the original, delete inactive jobs from the list.

Sending in the single sign-on environment of Active Directory

Single sign-on

If you log in to this machine using the external server authentication of Active Directory, you can send data to the shared folder without re-entering the authentication information (user ID and password) at SMB transmission.

Operations required to use this function (for the administrator)

Enable the single sign-on setting.

How to configure the setting is explained using **Web Connection**. For details, refer to [Here](#).

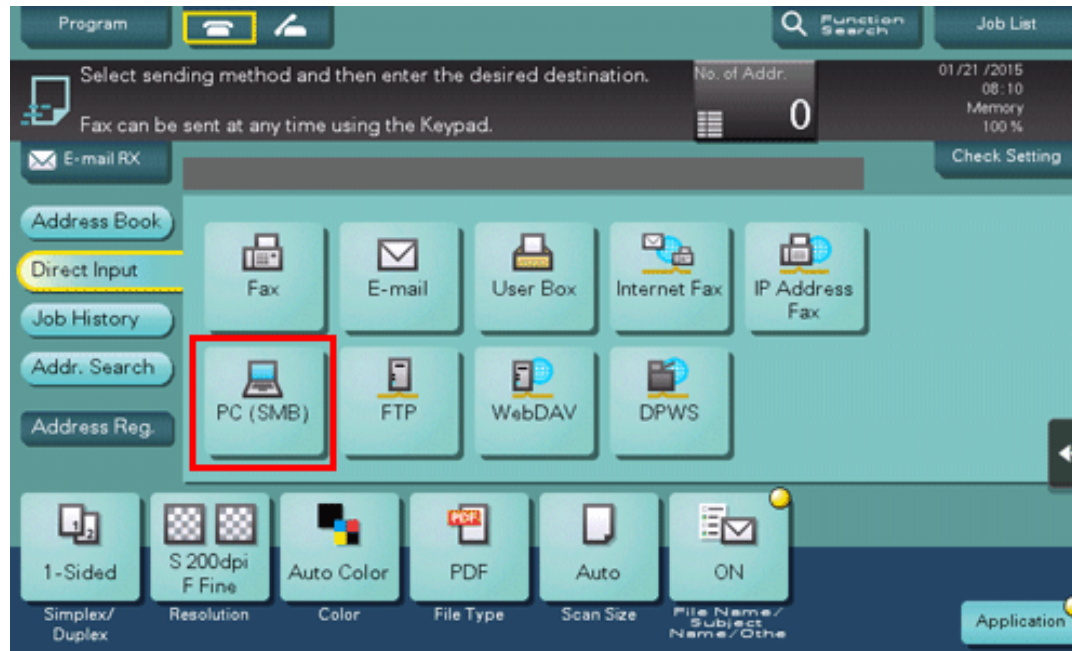
Operation flow

1. Load the original.

2. Tap [Scan/Fax].



3. Tap [Direct Input], then tap [PC (SMB)].



4. Directly type in the host name and file path of the destination, or tap [Reference] and specify the shared folder of the destination. Then, tap [OK].

PC (SMB)

No. of Address 0

Check Setting

Host Name HOME-PC

Check Connection >> Host Name Search >>

File Path scan

User Name user01@abc.local

Password *****

Reference >>

Next Dest.

Cancel OK

5. Configure Scan option settings as necessary.

6. Press the **Start** key.

- ➡ Tap [Check Setting] before sending, and check the destination and settings as necessary.
- ➡ To redo operations for specifying destinations or option settings, press the **Reset** key.



Transmission begins.

➡ If you press the **Stop** key while scanning an original, the scanning process stops, and a list of stopped jobs appears. To cancel scanning of the original, delete inactive jobs from the list.