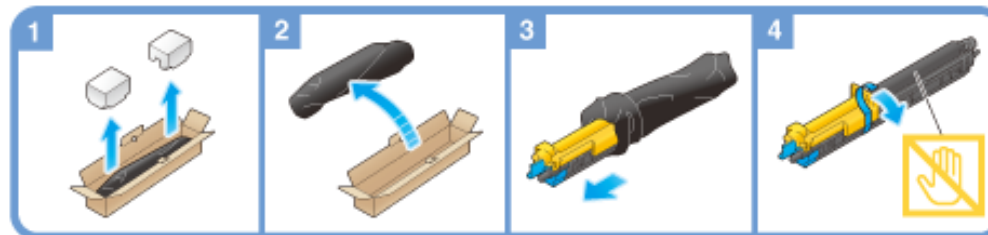


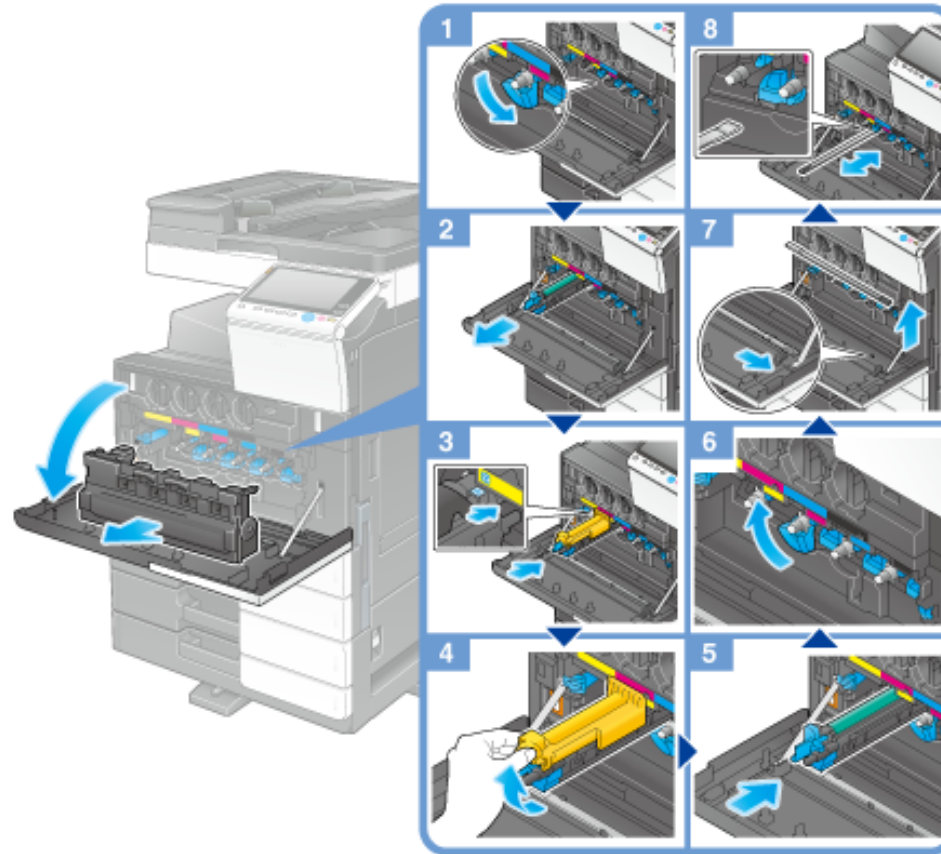
Unpacking the Drum Unit



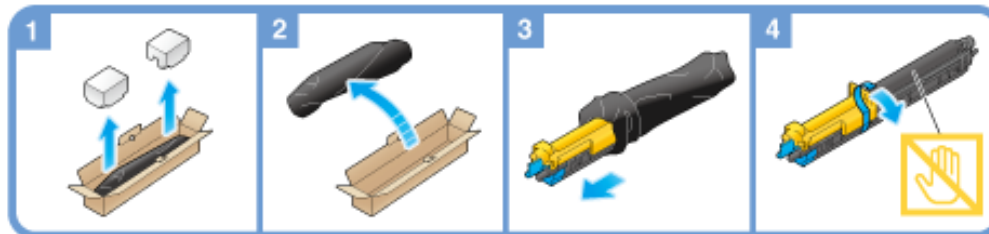


Tips

- ❖ Your service representative will collect your used **Drum Unit**. Put it in a black plastic bag and store it in a box by itself.
- ❖ A **Drum Unit** may be damaged due to exposure to light. Do not take it out of a black plastic bag until just before it is to be installed.
- ❖ If a **Drum Unit** other than for black has reached the replacement time, printing can be continued forcibly using black. Tap [Continue], and then select a desired print job.
- ❖ After replacing a **Drum Unit**, be sure to clean the **Print Head Glass** for each color. For details on how to clean the **Print Head Glass**, refer to [Here](#).



Unpacking the Drum Unit





Tips

- ❖ Your service representative will collect your used **Drum Unit**. Put it in a black plastic bag and store it in a box by itself.
- ❖ A **Drum Unit** may be damaged due to exposure to light. Do not take it out of a black plastic bag until just before it is to be installed.
- ❖ If a **Drum Unit** other than for black has reached the replacement time, printing can be continued forcibly using black. Tap [Continue], and then select a desired print job.
- ❖ After replacing a **Drum Unit**, be sure to clean the **Print Head Glass** for each color. For details on how to clean the **Print Head Glass**, refer to [Here](#).