

## Checking Consumables Status

### Checking Consumables Status

Users will be informed of time to replace a **Toner Cartridge**, **Drum Unit**, or **Developing Unit** via a message displayed on the screen.

Also, users can select [Utility] - [Check Consumable Life] to display the current status of consumables (consumption level) on the screen and check it.

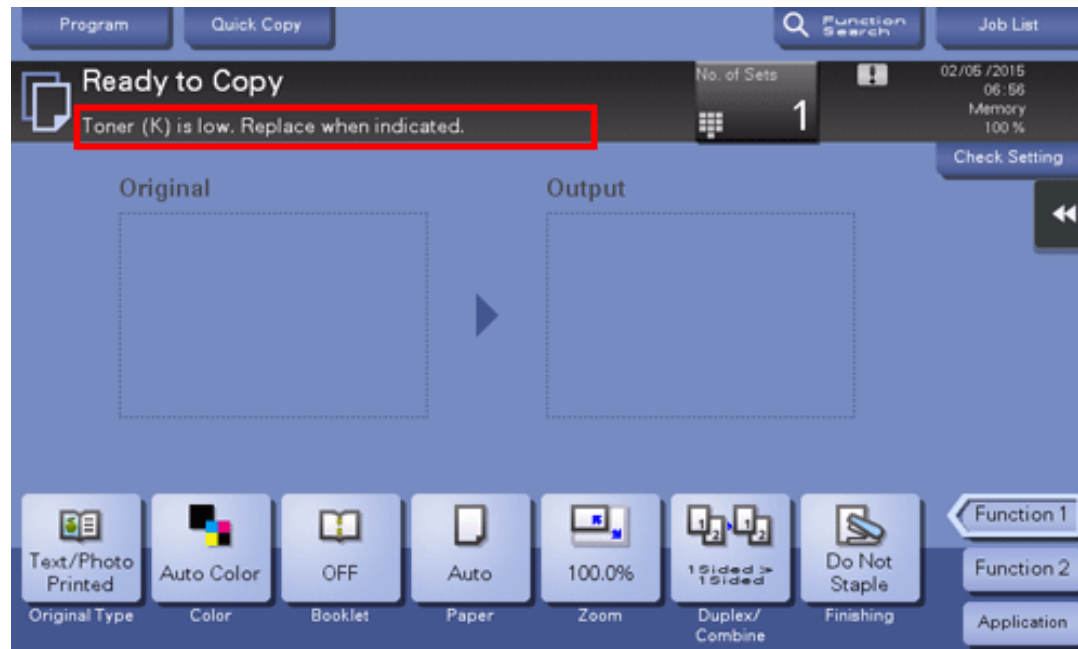


### Tips

❏ [Check Consumable Life] is only displayed in some areas.

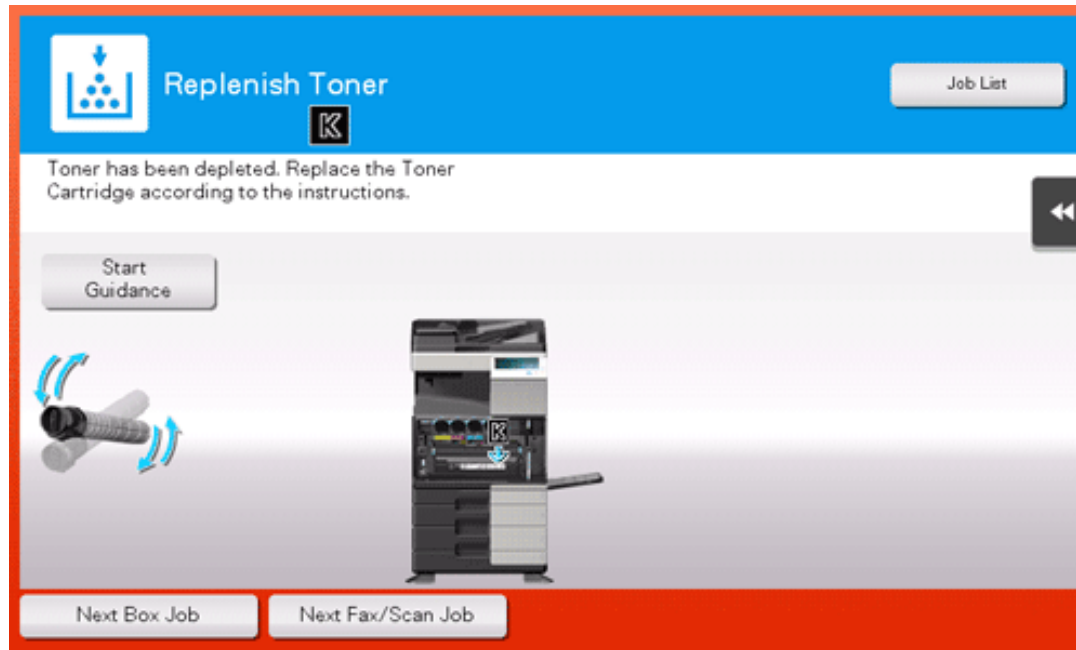
### When toner is running out in the Toner Cartridge

When it is almost time to replace a **Toner Cartridge**, an advanced warning message appears. Prepare a replacement **Toner Cartridge** based on the maintenance contract.



## When it is time to replace a Toner Cartridge

When it is time to replace a **Toner Cartridge**, a replacement prompt message appears. Replace it based on the maintenance contract. Tap [Start Guidance] to display the replacement procedure on the screen and check it.



## Reference

❏ For details on the replacement procedure, refer to [Here](#).

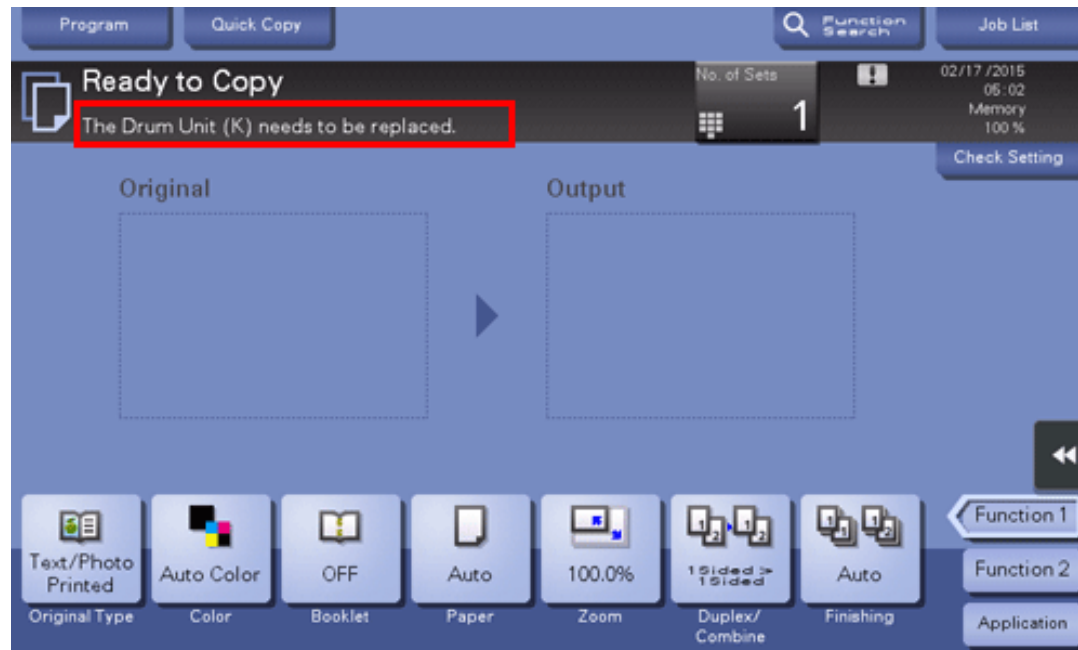


## Tips

- ❖ Do not replace a **Toner Cartridge** for a color that is not displayed.
- ❖ When it is time to replace a **Toner Cartridge** of a color other than black, printing can be forcibly continued using black. Tap [Continue], and then select a desired print job.

### When it is almost time to replace a Drum Unit

When it is almost time to replace a **Drum Unit**, an advanced warning message appears.



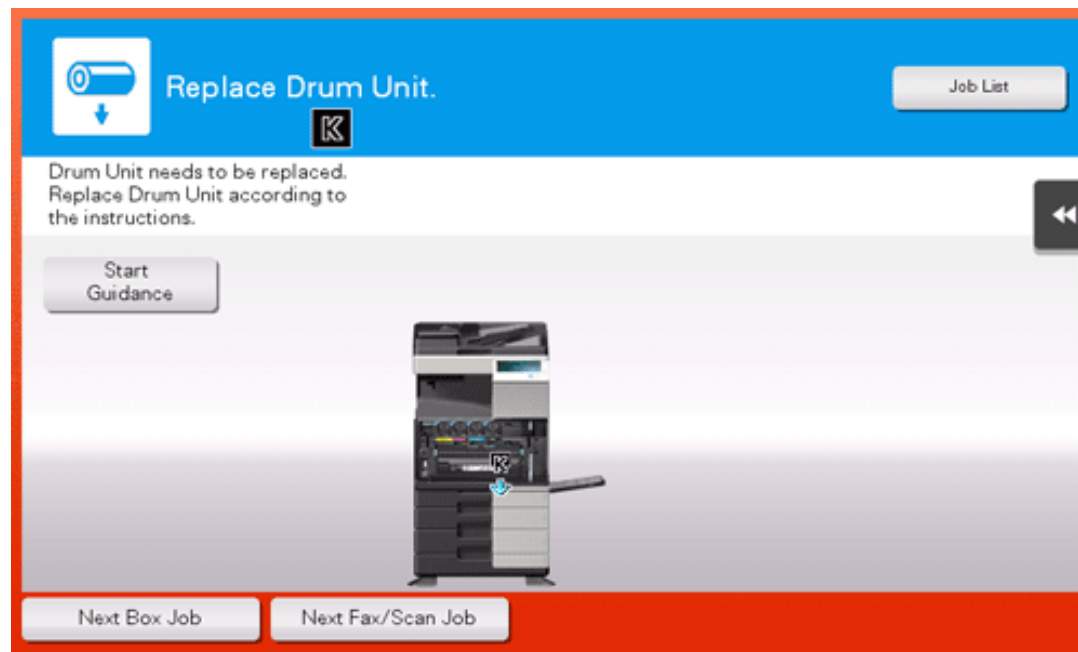


## Tips

- ❖ By the factory default status, this message is displayed only in some area.
- ❖ The settings by the service representative are required to display a message about **Drum Unit**. For details, contact your service representative.

### When it is time to replace a Drum Unit

When it is time to replace a **Drum Unit**, a replacement prompt message appears. Replace it based on the maintenance contract. Tap [Start Guidance] to display the replacement procedure on the screen and check it.





## NOTICE

- ❖ A **Drum Unit** must not be replaced before the relevant message appears.



## Reference

- ❖ For details on the replacement procedure, refer to [Here](#).

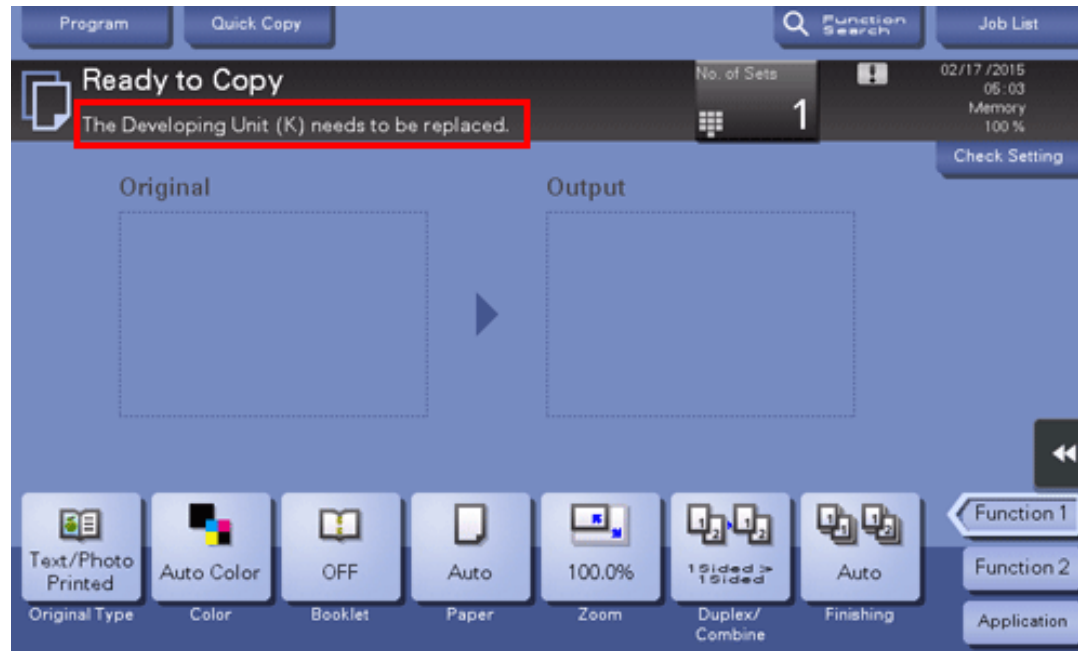


## Tips

- ❖ By the factory default status, this message is displayed only in some area.
- ❖ The settings by the service representative are required to display a message about **Drum Unit**. For details, contact your service representative.
- ❖ Do not replace a **Drum Unit** for a color that is not displayed.
- ❖ When it is time to replace a **Drum Unit** of a color other than black, printing can be forcibly continued using black. Tap [Continue], and then select a desired print job.

### When it is almost time to replace a Developing Unit

When it is almost time to replace a **Developing Unit**, an advanced warning message appears.

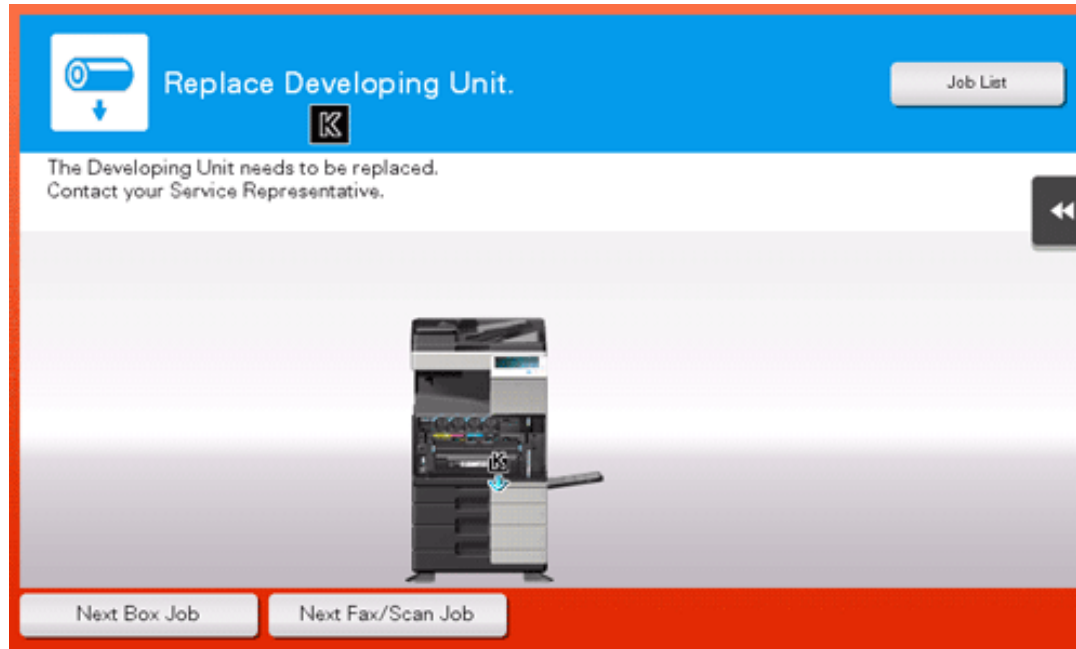


## Tips

- ❖ By the factory default status, this message is displayed only in some area.
- ❖ The settings by the service representative are required to display a message about **Developing Unit**. For details, contact your service representative.

### When it is time to replace a Developing Unit

When it is time to replace a **Developing Unit**, a message appears to prompt you to contact your service representative. If the message appears, contact your service representative.



## Tips

- ❖ By the factory default status, this message is displayed only in some area.
- ❖ The settings by the service representative are required to display a message about **Developing Unit**. For details, contact your service representative.
- ❖ When it is time to replace a **Developing Unit** of a color other than black, printing can be forcibly continued using black. Tap [Continue], and then select a desired print job.

## Checking the consumption level

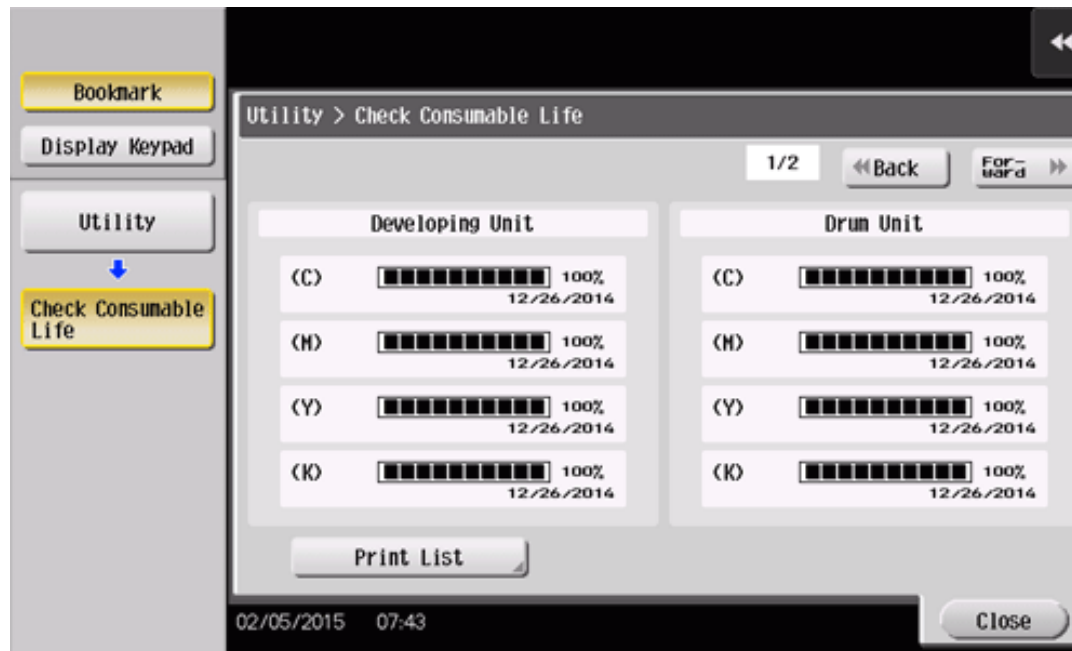
Check the status of consumables (consumption level) using the **Touch Panel**. When necessary, each level can be printed in list form.

[Check Consumable Life] is only displayed in some area.

1. Tap [Utility] - [Check Consumable Life].

## 2. Check the status of consumables.

➔ To print a consumption level list, tap [Print List], select paper, and then tap [Start].



### Reference

- ❖ If a warning such as for toner replacement or a paper jam occurs on this machine, it can be sent to a registered E-mail address. How to configure the setting is explained using **Web Connection**. For details, refer to [Here](#).