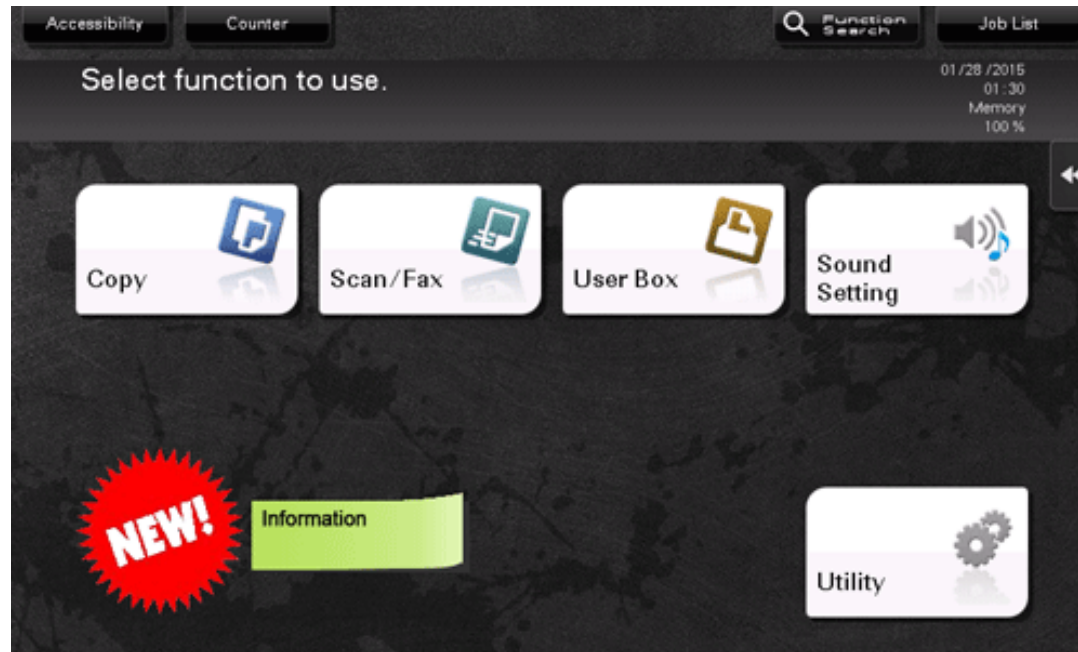


Arranging Widgets on the Touch Panel ([Widget Settings])

Widget arrangement function

You can arrange text, icons, GIF animations, and other items as widgets at desired positions on the main menu or the copy-mode screen. By arranging widgets on frequently used screens, important information can be highlighted.



Widgets can be arranged on the following screens.

- ❑ Main Menu
- ❑ Main screen of copy mode
- ❑ Current screen of copy mode

A widget icon or GIF animation image can be selected from the available selections or can be newly registered by the user. For details on how to register it, refer to [Here](#).

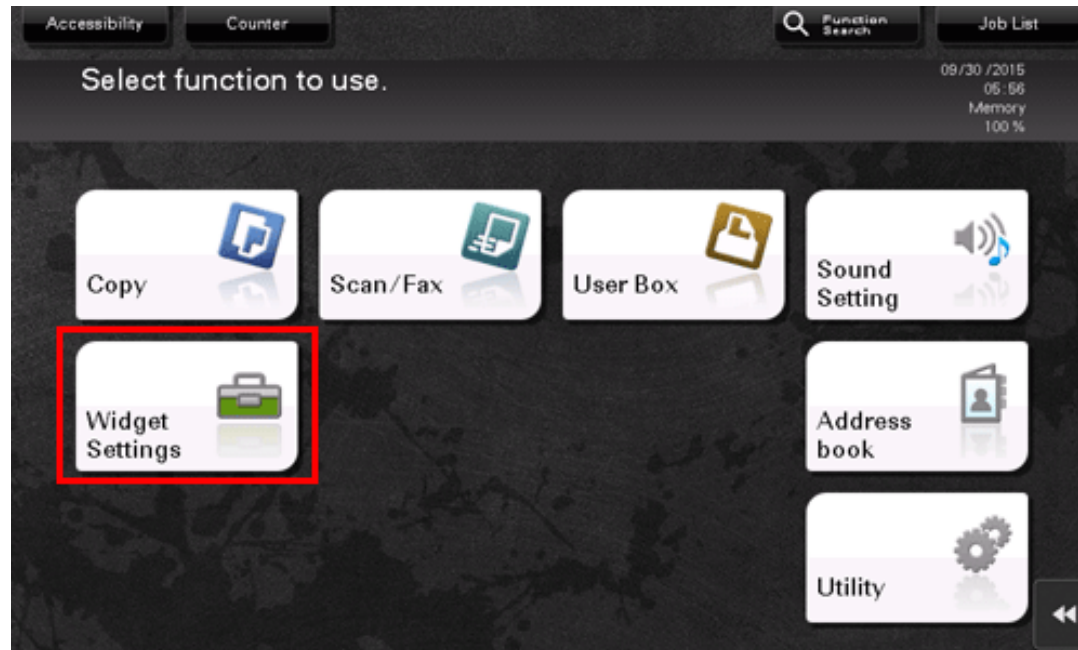
The specifications of icons and GIF animation images that can be registered are as follows.

Type	Specifications
Icon	File type: PNG


	File size: 1 MB or less Display size: 1024 pixels or less in width, 1024 pixels or less in height Number of items able to be registered: Max. 10
GIF animation	File type: GIF File size: 512 KB or less 512 pixels or less in width, 512 pixels or less in height Number of items able to be registered: Max. 3

Operations required to use this function (for the administrator)

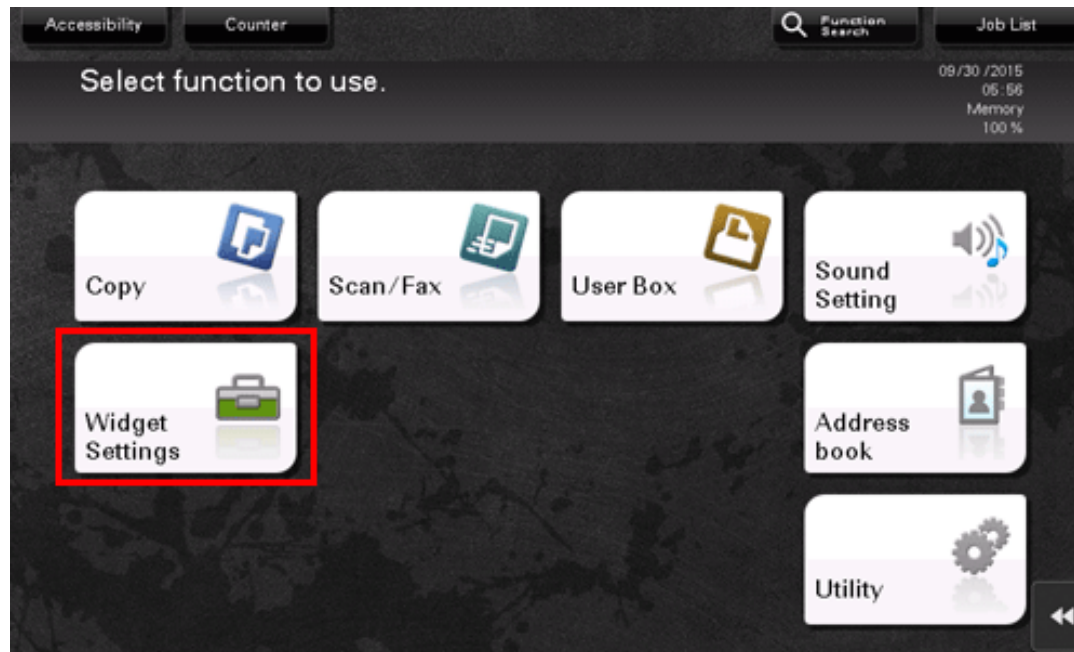
Place [Widget Settings] on the main menu. For details on the setting procedure, refer to [Here](#).



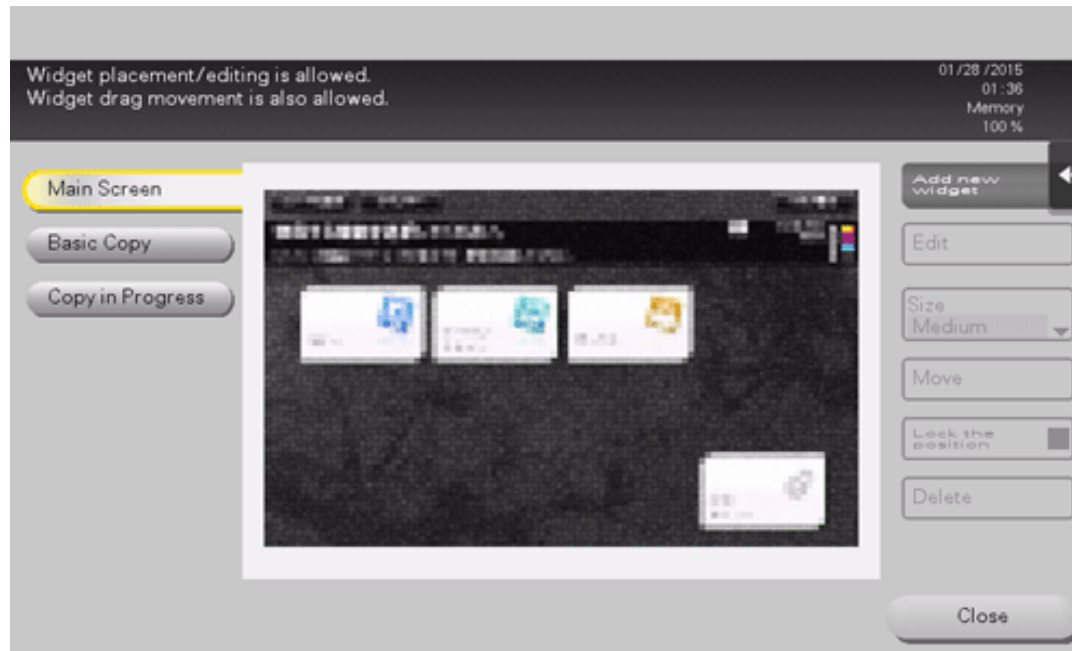
 **Related setting (for the administrator)**

 As necessary, you can select whether to enable the widget function (default: [Enable]). For details, refer to [Here](#).

1. Tap [Widget Settings] on the main menu.



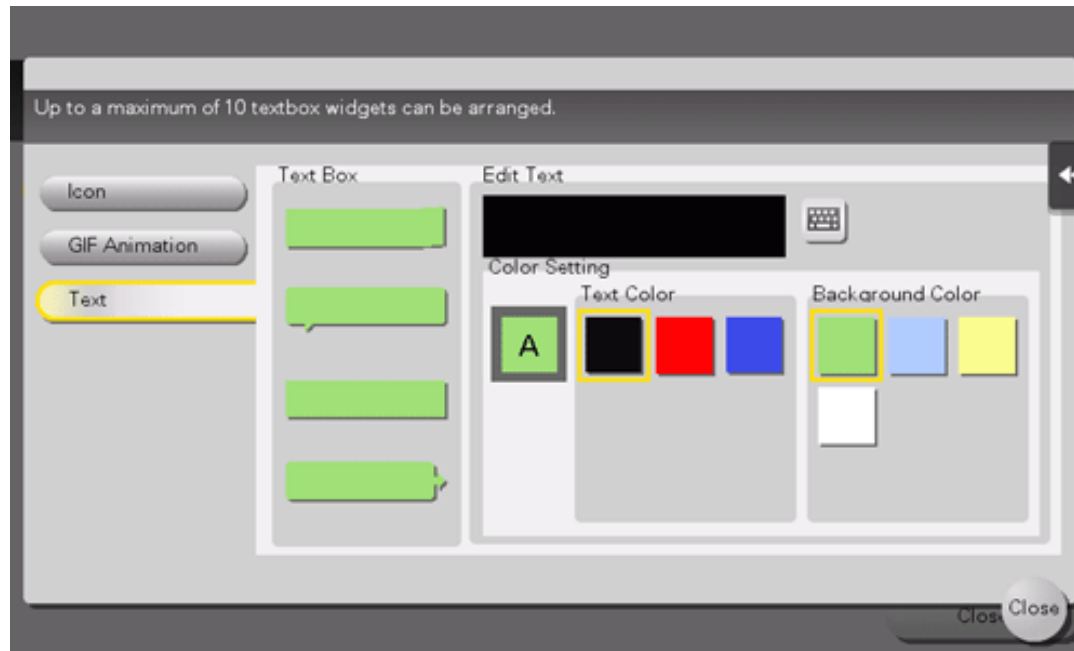
2. Select the screen to arrange a widget from the [Main Screen], [Basic Copy], or [Copy in Progress].



3. Tap [Add new widget].

4. Select the type of the target widget to be arranged.

- ➔ If you select [Icon] specify the desired icon from [Standard Icon] or [New Icon]. Up to 10 icons can be specified. To register a new icon, connect the USB memory device, which contains the target icon, to this machine, then tap [Register].
- ➔ If [GIF Animation] is selected, specify the target GIF animation from [Standard GIF Animation] or [Register GIF Animation]. Only one GIF animation can be specified. To register a GIF animation, connect the USB memory device, which contains the target GIF animation, to this machine, then tap [Register].
- ➔ If [Text] is selected, specify the text box to be arranged from [Text Box], then edit a text. Change the color or background color of the text as needed. Up to 10 text boxes can be arranged.



5. When widget specification is completed, tap [Close].

6. Change the size or position of the widget as needed.

- ➔ Selecting [Edit] allows you to edit the contents of the selected widget.
- ➔ Selecting [Size] allows you to change the size of the selected widget.
- ➔ Selecting [Move] allows you to move the position of the selected widget. Selecting [Lock the position] allows you to fix the position of the selected widget.
- ➔ Selecting [Delete] allows you to delete the selected widget.

7. Tap [Close].

Widget arrangement is then completed.